



2000

***KANE — The Spirit Lives On***

A history of the Kane and Rose Farm area in conjunction with the  
closing of the Kane Community Centre.

2000

Compiled by

The Book Committee:

Dora Hildebrand (chair), Ralph Groening and Audrey D. Friesen

The Reunion Committee:

Ralph Groening (chair), Barry & Audrey Friesen,  
George and Mary Penner, Norman & Elva Blatz  
and Hank & Dora Hildebrand

The Cairn Committee:

Barry Friesen (chair) and Ralph Groening

Printed by:

Country Graphics, Rosenort, Manitoba, Canada

ISBN #1-896257-29-1

## ACKNOWLEDGEMENTS

Mennonite Heritage Centre — Winnipeg  
Provincial Archives — Winnipeg  
National Archives — Ottawa  
Provincial Land Titles — Morden  
R.M. of Morris  
N.M. Paterson Company  
Morris Museum  
*Jacob & Aganetha Blatz* (book)  
*Abram & Agatha Toews* (book)  
*Barns of Western Canada* (book)  
*Precious Memories* by William Cutlip (book)  
*Cornelius W. Wiebe* (book)  
*Living Gold* by Evelyn Mullen (R.M. of Roland book)  
*Furrows in the Valley* (R.M. of Morris book)  
Chris & Merle Block (cover design)

A special thank you to all people who submitted information and treasured pictures for this book. It is the personal details that make the difference!

On behalf of the people of Kane, both past and present, we acknowledge and thank Dora Hildebrand for the endless hours and effort in publishing *Kane — The Spirit Lives on*. Dora was the driving force behind this book and had the daunting task of meeting deadlines. Thank you for making *Kane — The Spirit Lives On* a keepsake to ensure that the spirit of Kane does indeed live on.

Special thanks also go to Audrey D. Friesen who was our official proof reader and spent countless hours reading the manuscripts and making corrections. The 'teacher' was always present in her work!

We are also grateful to Ralph Groening, who as a councillor served well as our liaison between the Reunion Committee and the R.M. of Morris.



*The Reunion Committee - 2000*  
*Ralph Groening (chair), George & Mary Penner, Barry & Audrey Friesen,*  
*Hank & Dora Hildebrand, Norman & Elva Blatz*



*Kane, Manitoba*



***THE SPIRIT LIVES ON . . .***

<b><i>. . . IN OUR HISTORY</i></b> .....	<b>7</b>
Early History of Kane and Rose Farm	
A Convenient Barn	
How did Kane get its name?	
Early Kane Reflections	
<b><i>. . . IN OUR EDUCATION</i></b> .....	<b>19</b>
Woodvale School #350	
Queen Centre School #1219	
Kane Consolidated School #2006	
Kane School Register	
Memories from the Teachers	
<b><i>. . . IN OUR FAITH</i></b> .....	<b>99</b>
The Meeting Place	
Kane Christian Youth Society	
Kane Bergthaler Church	
Kane Mission Sisters	
<b><i>. . . IN LIFE AROUND US</i></b> .....	<b>121</b>
Halunkendarp	
Kane Community Centre	
4-H Clubs	
Reunions	
Kane Friends	
Disasters	
Sports	
<b><i>. . . IN OUR ROOTS</i></b> .....	<b>163</b>
<b><i>. . . IN OUR LIVELIHOOD</i></b> .....	<b>315</b>
The Railway	
A Long Walk with the CNR	
The Station	
The First Elevator	
The Second Elevator	
Business in Kane	
Kane Agri Services	
The Agriculture Album	
<b><i>. . . IN TROUBLED TIMES</i></b> .....	<b>349</b>
World War II	
A Close Call	
The C. O.'s Story	
C. O. Reunion	
At the Home Front	
Prisoners of War	
The Coming of the Japanese	
<b><i>. . . IN THE HEARTS OF ROSE FARM</i></b> .....	<b>359</b>
The Pioneers of Rose Farm	
Rose Farm School District #1577	
Rose Farm High School	
Rose Farm EMMC	

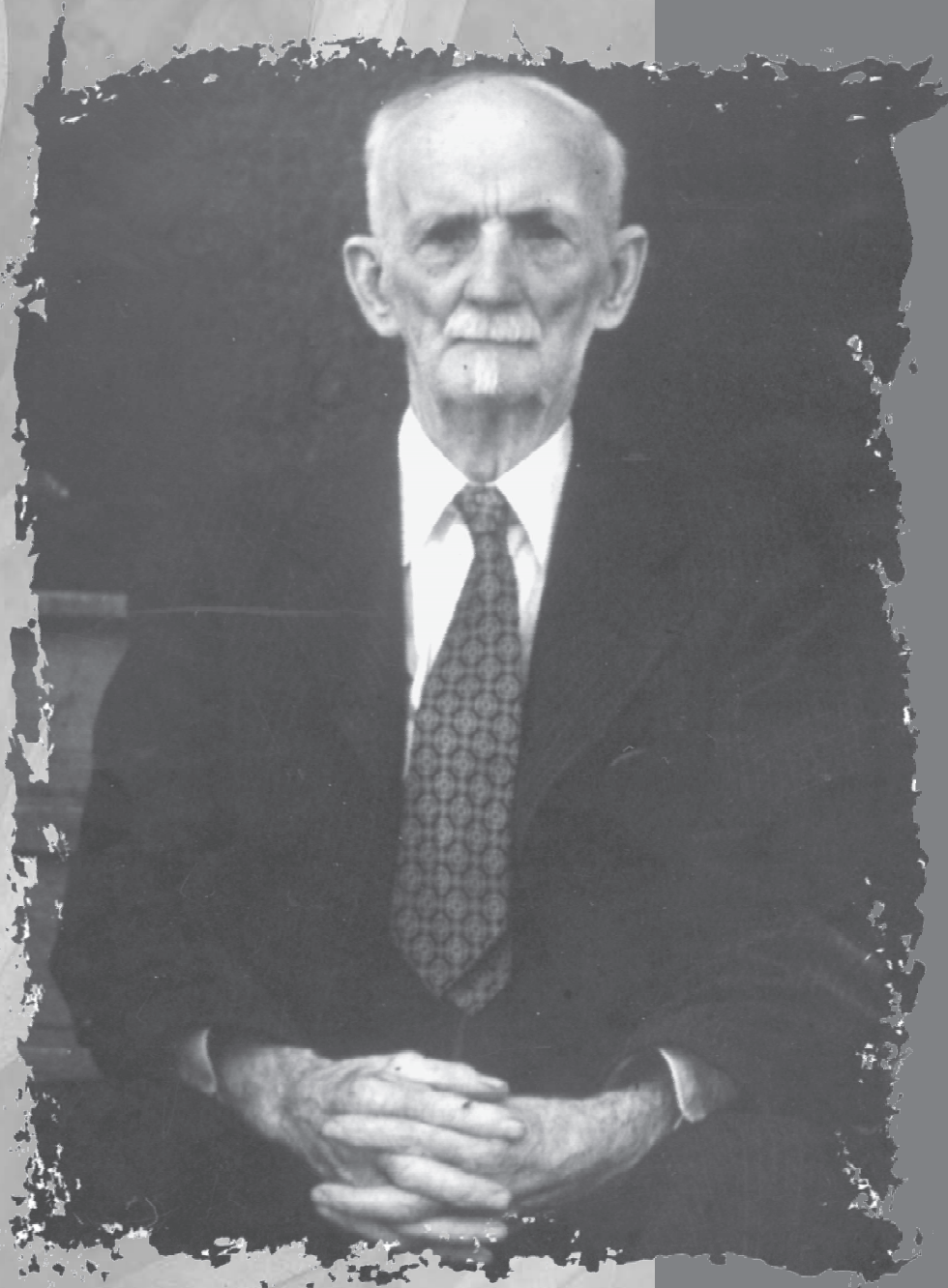
**JOHN H. KANE**  
*Founder of Kane*

John Henry Kane, an American business man and land broker from Odell, Illinois, began to purchase newly drained land in the Kane area in 1906. The first grain storage facilities were built at the railroad siding by Kane in order to transfer local production to market. Kane anticipated a business opportunity due to the increased demand for high quality Manitoba wheat at the conclusion of World War I. John Kane's long term goal was to promote the sale of his farmland to American immigrant farmers. He built a model farm one mile north of St. Jean, Manitoba in 1918 to provide these novice farmers with the opportunity to practise the skills to farm heavy clay soils in southern Manitoba.

John Henry Kane was born in Braidwood, Illinois on March 25, 1861. He was a grain buyer in Illinois before moving to Manitoba, Canada, with his wife, Elizabeth Ann (McGreevy) Kane. John Kane died on December 26, 1951 at the age of 90.

*The*

*he spirit  
lives on...*



*...in our  
history*

## EARLY HISTORY of KANE and ROSE FARM *by Ralph Groening*

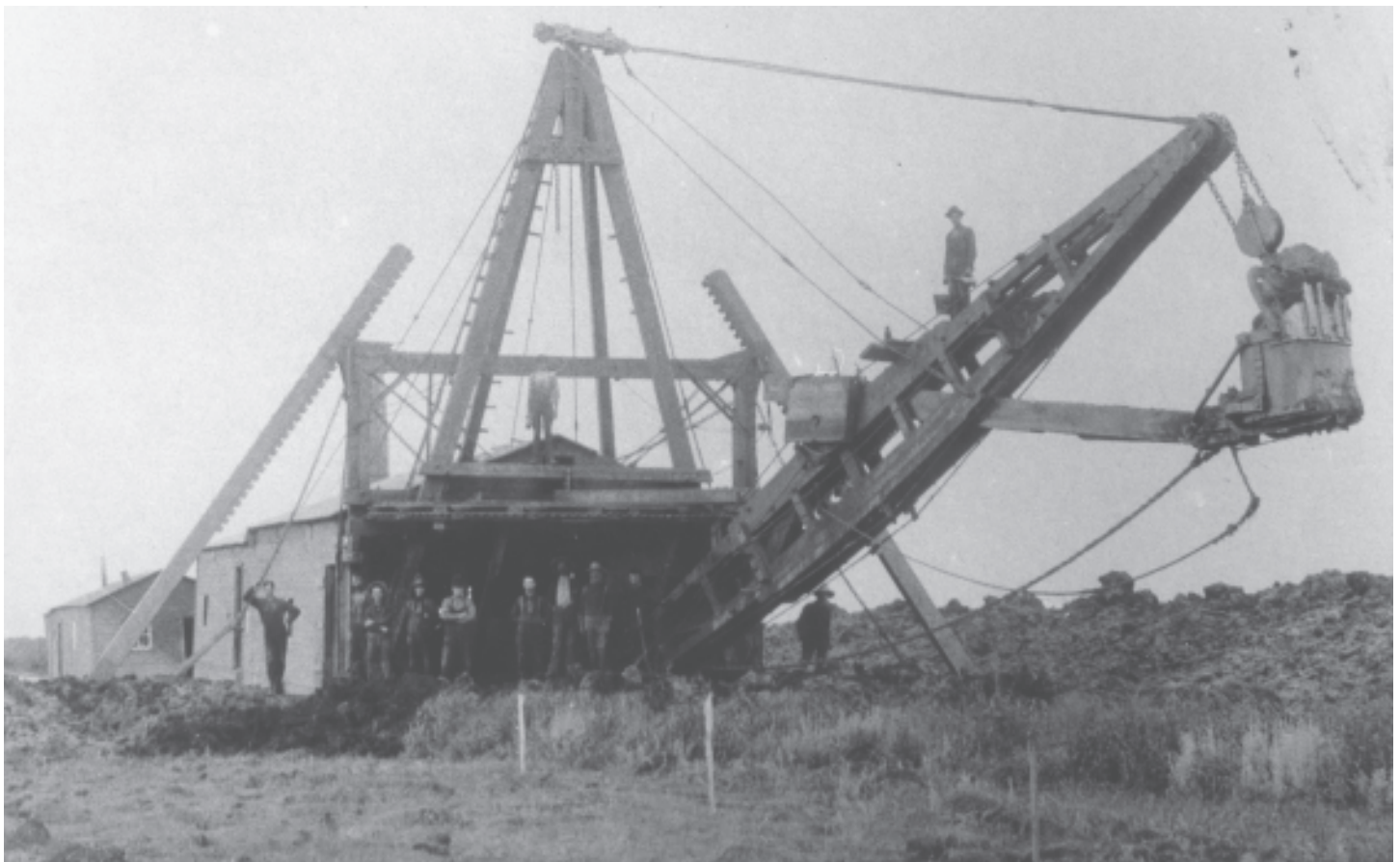
The development of Kane, the village and the district has always been limited by the ability of authorities and farmers to drain excess water off the land. Although the Northern Pacific and Manitoba Company built the railroad in 1889, significant settlement of the area happened much later.

All prairie land from Myrtle east was identified variously as the Boyne, Great or Big Marsh area. Run-off waters from the Pembina Hills drained east through the Shannon Creek, Tobacco Creek, and Boyne River until the land levelled out and waters accumulated to create the marshland. A Manitoba Free Press correspondent wrote in 1889, that after leaving Lowe's Farm the train travelled through the Great Marsh until arriving in the Myrtle and Roland area.

The Better Terms Act passed in 1885 by the Federal Government provided the impetus needed to begin drainage of the Marsh. All lands designated as 'swamp' were owned by the Federal Government up to this point. The new Act allowed the province to take ownership of all the swampland drained and made arable. Over two million acres were transferred to the province because of the Act. The sale of this land generated considerable dollars for the province and encouraged additional settlement. The

Tobacco Creek drain was begun in 1901-1902, and the Shannon Creek drain in 1903-1904. This early drain work was done with a floating dredge powered by steam. Winter work opportunities stockpiling wood to fuel the engines was an additional bonus for new settlers in these areas.

Prior to this drain work only the higher pieces of land had any farming potential. Therefore only land south of the present #23 Highway was homesteaded. The first homestead in the Kane School District was NE 27-4-2W in 1880-81, by John B. C. Lowe, a nephew of John Lowe the founder of Lowe Farm. The Rose Farm project on section 17-4-2W began at the same time. Large buildings were constructed to accommodate the farm manager and workers. However the Rose Farm agricultural enterprise failed as did Lowe Farm's, and by the late 1880's the lands involved in these projects were being offered for sale to individual homesteaders. Section 28 was unsuccessfully homesteaded in the late 1880's by W. Shanks, G. Whelan and Jim Bonser. R. Farell claimed NW 18-4-2W, but did not complete his obligations. Most other homestead activity took place in the Rose Farm area. Jim Sarvis set up a claim on SW 6-4-2W. Jim Brooks homesteaded NW 6-4-2W, Simon Brooks NE 6-4-2W, and Frank and Tom McLean NE 18-4-2W in 1891-92. S. Arkell claimed SW 20-4-2W, but sold to Ted Service in the early 1890's. By 1901, seventeen homestead



*The floating dredge that dug the Tobacco Creek drain, 1902 (three miles north of the #23 Highway).*

APPROVED BY THE MANITOBA TAX COMMISSION. FORM No. 1

RURAL MUNICIPALITY OF MORRIS 1926

Name of Municipality

THE WESTERN MUNICIPAL NEWS, WINNIPEG—48944 1925

NAME AND DESCRIPTION OF PERSONS ASSESSED, ETC.

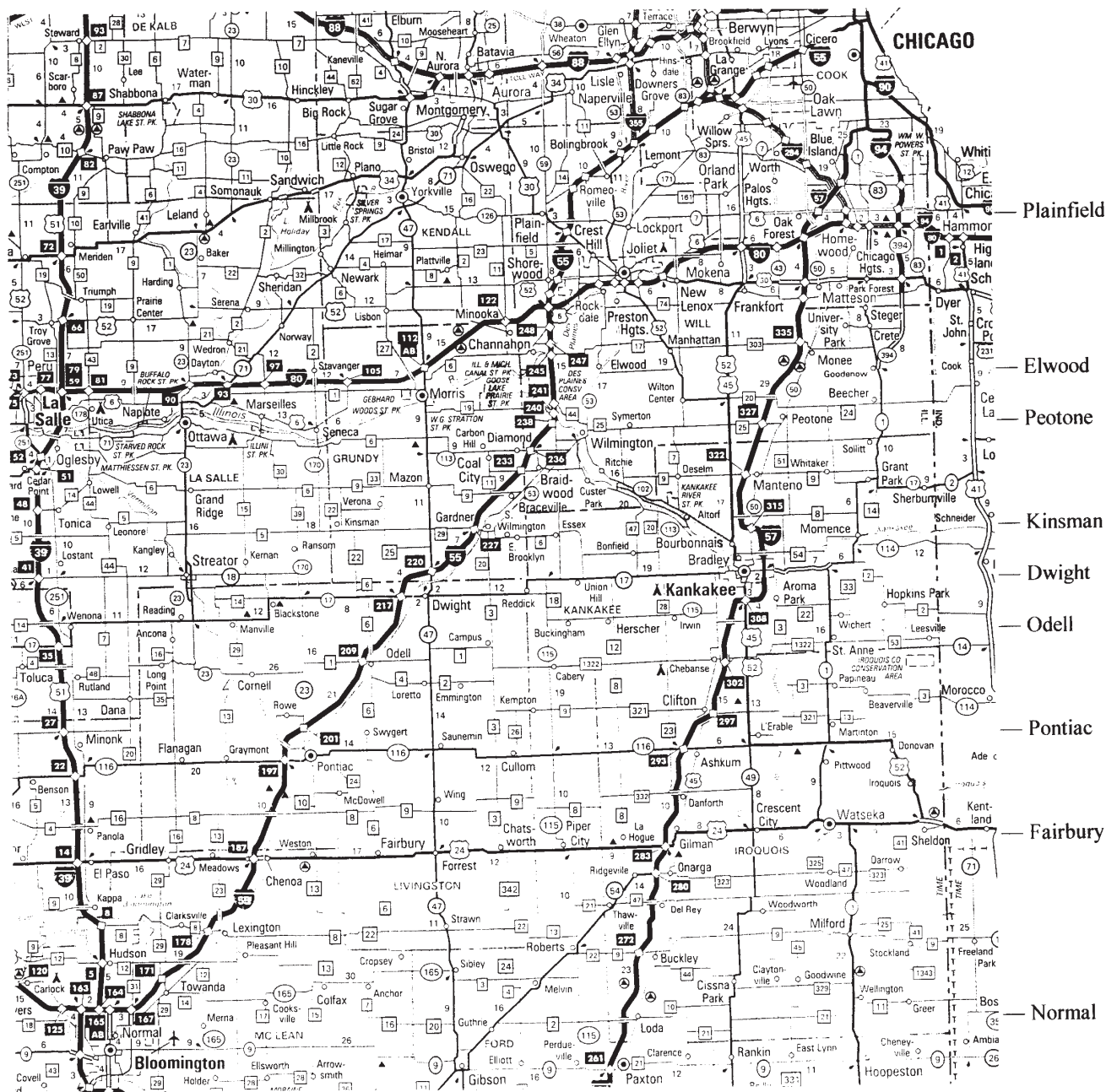
DESCRIPTION OF PROPERTY

NAME	OCCUPATION	ADDRESS	OWNER	TENANT	OCCUPANT	RESIDENT OWNER'S CONNECTION	RESIDENT	NON-RESIDENT	PART OF PARISH LOT OR SECTION	LOT OR SECTION
Powell Rosa		Atlanta Ill	x					x	W $\frac{1}{2}$	4
Mullen Geo et al	Farmer	Kane Man	x					x	All	5
Mullen Clara wife	wife	" "				x	x			
Davidson J B	Farmer	" "	x					x	E $\frac{1}{2}$	6
Cowen Jos		" "			x		x			
Cowen Agnes	wife	" "					x	x		
Cowen Wm	Farmer	" "	x					x		
Cowen Jean	wife	" "					x	x		
Gortly Louis		Malissa Iowa	x					x	Rt 36 & NW	6
Gortly Ernest		" "	x					x		
Gortly Mary E		" "	x					x		
Higgins Co Ltd	Merchant	Kane Man	x					x		360x
Kane Consolidated School										Rt 6
Petersen N M	Elevator	Winnipeg							on S N R Rt of Way	
Canadian Elevator Co		" "							on S N R Rt of Way	
North Star Oil Co		" "							on S N R Rt of Way	
Wilken L G	Farmer	Kane Man	x					x	E $\frac{1}{2}$	7
Kelleher W L Killalea W B		Massville Ill	x					x	W $\frac{1}{2}$	7
Handlow Jos W	Farmer	Kane Man	x					x		
Handlow Mary	wife	" "					x	x		
Klahn George		Sunberry Iowa	x					x	S E	8
Olsen Emil	Farmer	Kane Man	x					x		
Wilken L G		" "	x					x	S W	8
Mow Farm Lands Ass'n		Winnipeg	x					x	N W	8
McQuade J H	Farmer	Kane	x					x	R E	8
McQuade Florence		Pekin Ill	x					x	S E	9
Gurney Edward B		" "	x					x		
Gurney J B	Farmer	Kane	x					x		
Lindle Clarence		Malissa Iowa	x					x	S W	9
Olsen Emil	Farmer	Kane	x					x		

Land and property owners of Kane settlers in the R.M. of Morris, in 1926.

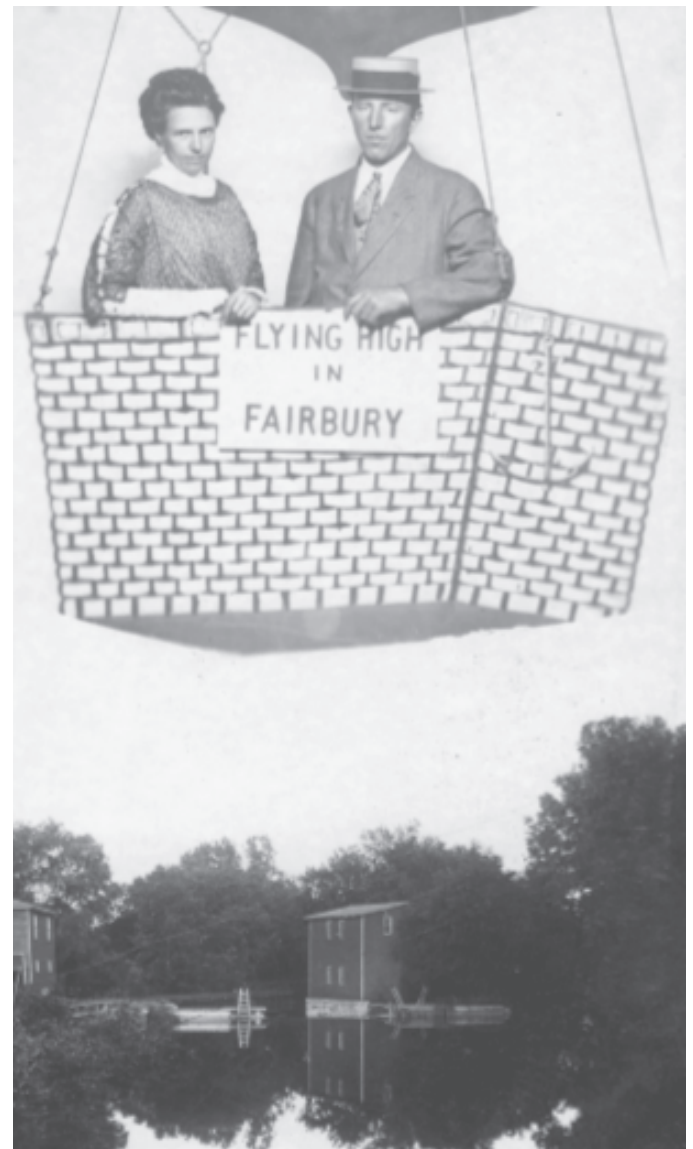


## ILLINOIS - Home of John H. Kane



Mr. Marcus Johnson  
Lowe Farm,  
Manitoba,  
Canada.

Fairbury, Ill.



*These postcards belonged to Marcus M. Johnson and date back to 1908-1912. They are addressed to 'Lowe Farm' because Kane was without a post office at that time. Mark Johnson came from Fairbury, Illinois and settled on 19-5-2W.*



claims had been submitted to the province, all in township 4-2W. By 1894, six families were living in the Rose Farm District with a total of 430 acres in crop cultivation. The first Mennonite families were Isaac Dueck on SW 7-4-2W and Diedrich Reimer on S 17-4-2W. By 1898 an influx of additional Mennonite families moving north from the West Reserve in search of cheap land added to the population. These early settlers included Jacob and Daniel Blatz, Peter Funk, B. Neufeld, Abram Groening, F. J. DeFehr, Cornelious Enns, D. K. Harder, J. Martens, C. Epp, Derk Boldt, and families. About 800 acres south of Kane were seeded in 1898.

Settlement in other areas of the Kane School District was more limited. To the west Thomas Kirk had purchased the west half of 36-4-3W in 1884. John Pfrimmer settled on 14-5-3W in 1899. Township 5-2W appeared much less attractive to settlement.

About one-third of the land in township 5-2W was owned by the province at the turn of the century. This land was reclaimed swampland and was not considered particularly attractive. In 1901, only one person lived on 5-2W. John Hoffman, a bachelor, lived on SE 25-5-2W. George Davidson purchased 5-5-2W and 6-5-2W in 1903, and began working the land the following year. Jim Miller who came to Manitoba from Ontario with G. Davidson settled on SE 6-5-2W in 1905. George Miller bought 5-5-2W in 1912 and established a farm site. This farm was sold to Frank G. Blatz in 1943, and is today owned by Frank Blatz Jr. These were the earliest settlements in 5-2W. South of the present Kane was slowly being settled as well. By 1899 all of 30-4-2W had been settled. R. Margetson of Myrtle owned the NW, Klaus Heide of Lowe Farm NE, John Dyck of Lowe Farm SW, and Peter Geworski of Lowe Farm owned SE quarter of 30-4-2W. No one however lived on either SW of 6-5-2W or all of 31-4-2W, the present site of Kane. By 1901 Scott and Harry Pierce of Myrtle lived on NE 31-4-2W and John Dyck had purchased the south half of 31-4-2W.

Land speculation played a major part in the further development of the Kane and to a lesser extent the Rose Farm area. The province of Manitoba fueled this speculation by actively promoting the newly drained swamplands to new immigrants in Ontario and the United States. Economics of wheat and flax production also played a role in the developing real estate boom. By 1904, the price of wheat had increased about 25% to \$1 a bushel. The Canadian Paint Company built a special warehouse in Lowe Farm to handle the flax production more effectively.

On September 17, 1904, Mr. M. Collins, a banker from Peotone, Illinois and Louis M. Arnold stayed at the Grand Pacific Hotel in Lowe Farm to investigate the potential of the land they owned in the area southwest of town. They proposed to construct buildings on their properties to add to their attractiveness. The impact of these investors and speculators played a major role in the development of agricultural land north of the (Mennonite) West Reserve and south of Winnipeg. Of particular interest was the role of Illinois investors and real estate agents

in the development of the Kane community. By 1909, almost 20% of all land in the Rural Municipality of Morris was owned by people from Illinois. Most of these people came from communities southwest of Chicago including towns like Pontiac, Odell, Peotone, and Fairbury.

One of these investors was a businessman called John Henry Kane of Kinsman, Illinois. Kane ran a grain elevator in Kinsman and later assembled farm equipment for the John Deere Company. In 1896, Kane moved to Odell to sell real estate. In 1907, Kane moved to Pontiac, Illinois, a larger town ten miles south of Odell. John Kane bought NW 7-5-2W and SW 9-4-2W in the Kane, Manitoba area in January of 1906. Patrick Kane, John's brother, bought NW 12-4-2W and SW 13-4-2W. Most of Kane's land investments were in townships 6-1 and 2W, south of Sperling, Manitoba. This newly drained land was cheaper and offered greater profit potential. John Kane also worked in partnership with a fellow Pontiac farmer and investor Joseph Grundler. Grundler set up a farm site on section 10-6-2W and used this farm to promote the potential of Manitoba farmland to Illinois farmers. Many Illinois families from the Odell, Pontiac, Dwight, Plainfield, and Fairbury area southwest of Chicago immigrated to Sperling. Many of these Illinois families still live and farm at Sperling. The Ribordy, Wurmnest, Gehring and Rance families are representative of this immigration.

John H. Kane also decided to establish a farm site in Manitoba to promote the benefits of immigration. Kane established a farm one mile north of St. Jean in 1912. The Kane family was of the Roman Catholic faith and the location close to a Catholic community was no accident. In 1918, Kane spent \$10,000 to build a new state of the art three level barn with its own electrical generating plant. The barn was considered the largest in Manitoba at the time and is listed in "Barns of Western Canada" because of its style and quality. A new house was also constructed. Young Illinois men, who would or could purchase land from John Kane, were hired to work on the farm for the summer as training for their potential immigration to Manitoba. Kane owned land in the R.M. of Morris and surrounding area from 1906 until 1923-24. During that time Kane owned from 2000 to 3000 acres at any one time. Some of the land owned by John Kane had originally been the property of John Lowe and had been made available at a very reasonable price.

John Kane managed the St. Jean farm using local hired help. Kane's son-in-law, James Jobst, was responsible for the hog enterprise on the farm. In his free time James Jobst played baseball for the Morris team that won the Southern Manitoba Baseball Championship in 1921.

The price of wheat dropped from \$1.80 a bushel in 1920 to 90¢ a bushel in 1921. By 1923 wheat was selling for 60¢ a bushel. This reality plus devastating hailstorms and significant problems with crop disease spelled the end of John H. Kane's Manitoba farm and real estate career. In 1923 John H. Kane and family returned to Pontiac, Illinois. The banks took over the Kane enterprises in Mani-

toba.

Ed McDermott, brother-in-law to John Kane, also farmed and invested in Manitoba farmland. McDermott and a son farmed in Manitoba until the 1930's. Ed McDermott owned the NW 3-5-2W in the Kane School District, for a time.

The real estate and related immigration boom that began in 1904-05 continued until World War I. The price of wheat which contributed to the boom stabilized between 75¢ to \$1.00 a bushel from 1904 until 1914. The war impacted food production worldwide and the price of wheat jumped from \$1.25 in 1916 to \$2.00 in 1917, peaking at \$2.40 in 1919. Land which had been selling for \$10 to \$20 an acre up to 1915, doubled in price. William Deutschman who immigrated from Elwood, Illinois in 1918 paid \$40.00 an acre for the west half of 3-5-2W. James Handlon, a Chicago policeman, settled on SW 7-5-2W in 1918. The Cutlip family also from Illinois, bought the NW of 32-4-2W in 1919 hoping to take advantage of these economical opportunities. The Schnebly family settled the NW 8-5-2W in 1916.

John Kane was not the only real estate agent to have influence in Kane. The Crouch brothers from Fairbury, Illinois, a small farm community twelve miles south of Odell, bought NW 9-5-2W in 1907. The four Crouch brothers, Chester, Alvin, Elmer, and Carol had considerable influence in the communities of Kane and Lowe Farm. They followed the style set by John Kane and Joseph Grundler by setting up a model farm to emphasize the profitability of farming in Manitoba. The farm was located on 29-4-2W. The Crouch family lived on NW 29-4-2W for eight years before the land was sold to the Hurt family, relatives of the Crouch's. The Hurts lived in the Kane community until 1928. The Crouch brothers also had influence in the immigration of Mark Johnson, also from Fairbury, to settle SE 19-5-2W in 1919. This farm was purchased by Hank and Dora Hildebrand in 1959. The Crouch brothers had taken over the provincial immigration office in Iowa, and promoting Manitoba agriculture established three branch offices in the state of Illinois. The John Andresen and Fred Fredricksen families were part of this last major American immigration into Manitoba.

Demand for wheat also created a demand for services. The Kane siding had been used by farmers to load their cars up to this point. In 1918, the Interior Elevator Company, soon to be the N. M. Paterson Company, built an elevator at Kane. Thomas Kirk and his associate Woodfield Fitz-Henry built a general store in Kane in 1918. Kirk also owned a general store in Myrtle. The store was purchased in 1925 by the A. F. Higgins Company. Higgins, an early settler in the Roland area, owned stores in Morris, Carman, Winnipeg, and later Neepawa. Higgins moved to Winnipeg in 1915. The Higgins store in Roland unfortunately burned in 1924. The manager of this store, William Hill, took over the control of the Kane Store, but unfortunately in 1926, this store also burned. The second elevator in Kane was built in 1919 by the Canadian Consoli-

dated Company, later United Grain Growers. In 1920 a two-room school was built in Kane and the Kane Consolidated School Division #2006 was formed. The Queen Centre School located first on 29-4-2W and later on NW 20-4-2W served the community from 1903 to 1920. In 1920 Woodfield Fitz-Henry was appointed as Kane's first postmaster. By 1923, the North Star Oil Company had located fuel tanks in Kane in anticipation of farm mechanization. Kane was officially a community.

## A CONVENIENT BARN

*from the Morris Herald*

*(Morris, Manitoba, May 16, 1918)*



*This barn was built by John H. Kane north of St. Jean, Manitoba in 1918. It still stands today.*

*John H. Kane is erecting a barn on his farm that promises to be one of the best and most convenient in the Morris district. It is of the basement type; has a cement wall of 8 feet, with 20 foot posts on top. The main part is 40 feet by 90 feet with an annex 28 feet by 60 feet. There will be water in every stall for the stock. The building will be three stories and an elevator will convey all grains and other fodder from basement to the bins at the top. A chopper will be installed in the basement and the grain to be chopped will be handled by the elevators. There is in the basement a bored well, which furnishes an abundant supply of hard water. Soft water tanks will be installed as well, so that both hard and soft water will always be on top. The water system will be connected with the house so as to make a sufficient supply there.*

*In the basement wing will also be installed a weighing scales. There will be accommodation for 36 head of cattle and brood pens for 28 sows. In the basement annex will be a milk house, a meat house, a work shop, a wash room besides a complete electrical plant operated by a gas*

*engine that will supply the barn with electric light. Light will also be supplied to the house from the same source. In planning this barn nothing that would add to its' convenience appears to have been overlooked. When completed the barn will well repay a visit by those who are interested in modern conveniences on the farm and especially by any who contemplate making any changes in their farm buildings.*

(A Red Cross dance was held in the new barn of J. H. Kane, 1 mile north of Ste. Jean, 5 miles south of Morris, on the Jefferson Highway on Thursday, July 18th, 1918. The music was by the Winnipeg Grenadiers' Orchestra. The admission for the gentlemen was \$1.00. Sponsors were the Ste. Jean Baptiste Overseas Club.)

## HOW DID KANE GET ITS NAME?

*by Ralph Groening*

James Miller arrived in Manitoba in 1903 and farmed 31-4-2W. The will of the community at the time was to name the railroad siding, located on NW 31-4-2W, *Miller*. The railway however indicated that the name 'Miller' was already in use. Therefore the name *Kane* was chosen. Various theories have been presented regarding the origin of the name. The book 'Place Names of Manitoba' suggests that Kane was named after a Robert Kane, a local landowner and real estate agent. There is however no record of any person by the name of Robert Kane having owned land anywhere in the area during the time from 1900 to 1920. Only two people by the name of Kane owned land in the area during this time period. These two gentlemen were Patrick and John H. Kane, brothers from Odell, Illinois. John H. Kane quickly bought out his brother and expanded his landholdings. Kane hired managers to operate the farms he owned. Grain storage facilities were built along the rail siding in Kane. While no official record has been found to indicate when the siding was first listed as *Kane* we can assume it to be between 1910, John Kane's first real expansion in the area, and the construction of the first elevator in Kane in 1918.

Discussions with the Kane family in Illinois and Michigan substantiate that opinion. The Kane family legend was that a community near the Kane farm in Manitoba was named after their grandfather and great-grandfather. Mrs. Katie (Kane) Jobst, only daughter of John Henry Kane, visited the community in 1977, and had her picture taken beside the 'Kane' highway sign outside the village.

Jack W. Jobst of Michigan, great-grandson of John H. Kane, has this to say about the founder of our town:

"I remember John H., who died when I was ten. I remember him as a gaunt man, usually sitting in a rocker with a breadboard on his lap, playing solitaire. For Christmas one year, someone gave him a new pack of cards. In an old photo he looks quite a bit taller than most of his relatives, but he was probably of moderate height, say 5' 9" or so.



*John H. Kane's only daughter Katie Jobst and her son Jim, 1918.*



*The Morris Baseball Club of 1921 with their mascot, young Jim Jobst (top center) and his father Jim Jobst (left center). The senior Jim Jobst was the son-in-law to John H. Kane.*





*The Kane family. John H. Kane is first from the left in the middle row and his wife Elizabeth (McGreevy) Kane is second from the left in the first row.*



*Katie (Kane) Jobst and her son Joe and grandson John, visit Kane, Manitoba in May of 1977. (Three generations of the Kane family.)*



*John H. Kane (l) and his brother Tim.*

"He was a friendly, easy-going man. My father knew him well because John H. lived with his daughter for the last ten years of his life or so. He lived in a house in Pontiac filled with kids (my father is one of eight), and he was kind. John H. had some math skills, apparently (these would have been useful in his real estate business dealings), for he helped his grandchildren do their math homework, according to my father.

"I recall an anecdote about John H. When the boyfriends came over to pick up their dates, that is, when my aunts were in high school, John H. would always call to them as they came in the door, 'She's not ready yet. Come over here in the living room. We have time for a hand of rummy.'"

From an audio tape recorded back in 1978, Jack W. Jobst relates some of his grandmother Kate's (John H. Kane's daughter) conversation. "She mentioned that one year her father bought a brand new motorcar for the trip, against his wife's wishes, and then took her, Kate, with him out in the country as he practiced his driving skills for the trip. She mentioned the crank used to start the vehicle, and how the newfangled motorcars often scared the horses into the ditches on either side of the road. 'He was a good driver,' she said. 'He learned quickly.'

"The family took tents with them to sleep in for the trip up from Illinois. They would stop at the farmhouse for permission to sleep on the owner's land. One night the rain came down in torrents, and the lady who owned the land came out to their tent and invited them inside because the weather was so bad, but they remained outside."

John Henry Kane was born in Braidwood, (near Joliet) Illinois on March 25, 1861. He married Elizabeth Ann McGreevy (1862-1948) and the couple had four children, two of whom survived to adulthood: John Timothy Kane, and Catherine (Kate) Lauretta Kane Jobst. John H. Kane died in Pontiac, Illinois on December 26, 1951, at age 90.

## EARLY KANE REFLECTIONS

*by Ed H. Groening*

My earliest memory of some of the Kane people was related to the Queen Centre School District No. 1219. This school, together with several other small schools, later formed the Kane Consolidated School. The reason why the Queen Centre School seemed of interest to me was that my father, Henry A. Groening, was one of three trustees and secretary treasurer. Another trustee was my favoured uncle, Abram A. Groening. A third trustee was Peter Funk, a neighbour and uncle by marriage. I personally did not go to that school, but five of my older siblings did, and therefore, there were firsthand reports.

The school had a reputation for having exemplary teachers. It was founded in 1902, but records prior to 1915 apparently are not available. According to the 1915 register, the teacher was Anna Nickel, a very fashionable lady. An ex-student described her appearance precisely. There were twenty-four students in the first four grades. Names such as Groening, Penner, Dyck, Funk and Crouch are listed. The 1918 school register lists a reduced number of students, for the reason that some students had transferred to another school. The 1918 list had two Crouch boys and one Ruth Schnebly.

The first Queen Centre School, earlier called Cork, was actually on the Crouch section 29-4-2W, one half mile south of the Crouch yard, where Abram Toews later lived. The second Queen Centre School was built one half mile south on the NW corner of section 20-4-2W, where Darrell Penners now live. Other teachers of the school, given in the records, are Henry W. Wiebe, J. G. Neufeld, C. W. Wiebe, brother to Henry and Maria Loewen.

At home, we heard a lot about the Crouches. They came to Manitoba from the United States. Like many of the Americans, they were highly aggressive people, who came to Canada with the intention of improving their lot. The Crouches were instrumental in bringing many of the American families to Kane and other areas of Manitoba. Of course, in the Kane District were other families from Eastern Canada and The British Isles, but the American classmates were of special interest in Kane School.

There is a story about the Crouches that survived. The Crouch boys came to the Queen Centre School with horse and buggy. On one occasion, their horse, which was very lively, made the corner too fast and stepped on the edge of a steel culvert, badly injuring a leg. The horse was losing blood. The young school teacher applied a tourniquet to the horse's leg until a vet was brought out to stitch up the cut, thus saving the life of the horse. That young teacher later became the well-known Dr. C. W. Wiebe. My older brother was an eyewitness to the fact.

The Crouch's land bordered on some of our acreage. Some members of our family remember how the Crouches broke the land with a steam engine and a plow with many bottoms. Those who could afford it used steam engines or large internal combustion engines to do the soil breaking. The largest plow I have seen illustrated had fifty-five bottoms, pulled by three international Mogol trac-

tors. Oil tractors were coming into use at about that time.

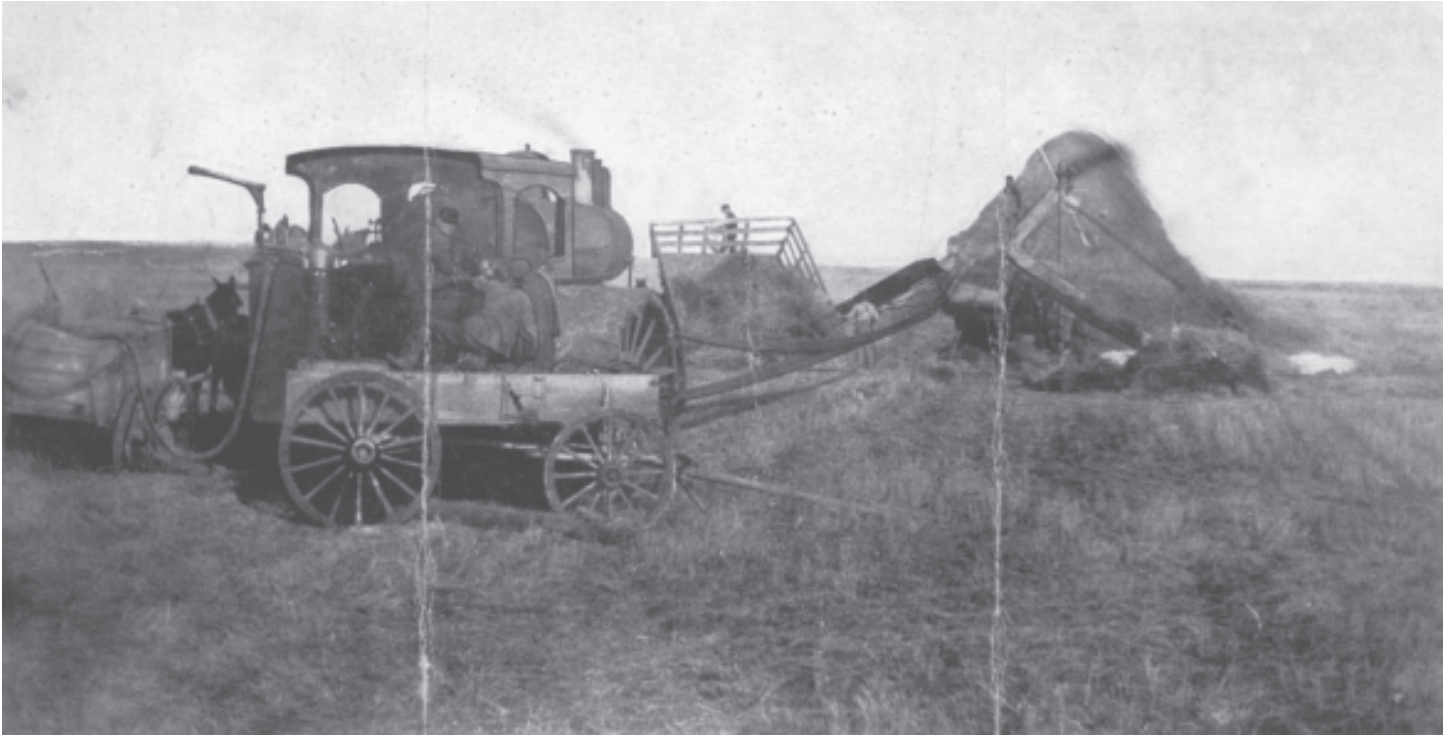
A number of the American families from down south did not stay in the Kane area, but moved back. By the time the Kane Consolidated School started in 1920-1921, the Crouches were no longer there. A family by the name of Hurt, a relative of the Crouches, took over the farm. Several of the families were related to the Crouches.

A family by the name of Cutlip lived across the road to the east of the present Norman Blatz's place. I remember seeing the low bungalow type dwelling when we passed by in the school van. There were two Cutlip boys and a girl in school. One of the boys, I recall, was a fun loving chap. The Cutlips apparently left an established farm in order to acquire a larger acreage here for their family. They worked hard and conscientiously and successfully at first, but had crop failures for some years and returned to Illinois. There was no lack of effort on their part for not succeeding. Their farm was right in the path of the spring flood and drainage was not what it is today. One of the Cutlip boys later became a preacher.

Not all farmers had steamers or big tractors to do the plowing, etc. One enthusiastic farmer claimed that the small Fordson tractor was the thing to use. Once you have the Fordson rev'd up and you keep your foot off the clutch pedal, you can get a lot of plowing done, he claimed. Apparently, the early Fordson tractors were regulated by a gas lever.

There was a farmer living four miles east of Kane, where Henry Penners later lived. His name was Gurney and he was one of the first trustees of the Kane School. He had a mind like Thomas Edison and invented a governor for the little Fordson tractor. This was just what the farmer needed who wanted to keep his foot off the clutch and keep moving. Gurney also moved away. Whether he made a fortune with his invention or not, I can not tell. Later, people living on the Gurney yard said there were model governors lying around.

There are a number of other families that could be mentioned but I will only mention one more which was of special interest to many of us. It was the Handlon family. James Handlon Jr. was a classmate through to grade nine. Paul Schnebly and Kenneth Hurt were also classmates through some of the grades. What was of particular interest to many of us were the stories of Chicago. Mr. Handlon Sr. had been a policeman in that notably one time western frontier city for some ten years. He had experienced all kinds of things on the streets of Chicago. Mr. Handlon too, was one of the early trustees of Kane School. Newspapers, presumably out of Chicago, were brought to school. Also, on the library shelf, was a Montgomery Ward and Company mail order catalogue, more illustrative than Canada's Eaton's catalogue. The comic section of the Saturday paper was passed around at recess time. Some of the adventure stories of my American school chums must certainly have originated in the Mississippi Valley by Mark Twain himself. If Charles Dickens represented the English interest, Mark Twain represented the American counterpart.



*Chester Crouch threshing with his Avery. Walter is in the cab. Note the mules on the water tank and the dump racks.*



*Elmer Crouch (and his bull dog) with his Case engine, the roller and then two drills seeding wheat.*





*Kane, Manitoba*

*The*

*he spirit  
lives on...*



*...in our  
education*



**WOODVALE SCHOOL S. D. #350****(section 2-5-3)****August 30, 1905****from the Manitoba Archives**

*In the matter of the petition of Alex Cook and others praying for the formation of a Union School District composed of parts of the rural municipalities of Stanley and Dufferin, and consisting of the following lands; -*

*sections: 25, 26, 27, 34, 35, 36, Tp. 4, R. 3 W*

*sections: 1, 2, 3, 10, 11, 12, Tp. 5, R. 3 W*

*To the clerks of the rural municipalities of Stanley and Dufferin; -*

*The arbitrators appointed under the provisions of sections 105 and 106 of the Public Schools Act, have the honor to report; -*

*1. That they have examined the petitions presented by the ratepayers of the territory in question, and this they have fully considered and examined the question involved in this petition, and have decided to grant the same, and that the previously mentioned lands, namely sections 25, 26, 27, 34, 35, and 36, Tp. 4, R. 3 west and 1, 2, 3, 10, 11, and 12, Tp. 5, R. 3 west be and are hereby formed into a Union School District.*

*2. That the board of arbitrators adjust and determine the rights, claims and liabilities of the above newly formed school district and Myrtle school district respectively, as follows:*

*That the school taxes due for 1905, and the municipal grant due for 1905, for and in respect to those lands detached from the Myrtle school district, namely sections 27 and 34, Tp. 4, R. 3 west and sections 3 and 10, Tp. 5, R. 3 west and which are to form part of the previously mentioned newly formed school district are to be collected by and shall remain the absolute property of the Myrtle school district.*

*3. That the previously mentioned newly formed school district shall not be liable for any of the liabilities, debenture indebtedness, or any debt whatsoever incurred or due by the school district of Myrtle, but all such debts, liabilities and debenture indebtedness shall be paid by the said school district of Myrtle.*

*4. That the school house and furniture in the same, situate in the school district of Myrtle, and all monies, goods, and property, belonging now to the school district of Myrtle, be and remain absolute the property of the said school district of Myrtle.*

*5. That the said determination of the arbitrator and the formation of the said Union School District take effect immediately.*

*6. That the costs of this arbitration shall be apportioned as follows; -*

*The municipality of Stanley shall pay Insp. W.J. Crans \$6.50, and Mr. Geo. Parkinson \$3.50.*

*The municipality of Dufferin shall pay Insp. A. L. Young, \$14.05.*

*Dated at Roland, Manitoba, this 30th day of August, 1905.*

*Signed: A. L. Young*

*W. J. Crans*

*George Parkinson*

*In the matter of the petition of Alex. Cook and others praying for the formation of a Union School District composed of parts of the rural municipalities of Stanley and Dufferin, and consisting of the following lands:*

*Sections, 25, 26, 27, 34, 35 and 36, Tp. 4, R. 3 west.*

*" 1, 2, 3, 10, 11 and 12, Tp. 5, R. 3 west.*

*To the clerks of the rural municipalities of Stanley and Dufferin;*

*The arbitrators appointed under the provisions of sections 105 and 106 of the Public Schools Act, have the honor to report;*

*1. That they have examined the petitions presented by the ratepayers of the territory in question, and this they have fully considered and examined the question involved in this petition, and have decided to grant the same, and that the previously mentioned lands, namely sections 25, 26, 27, 34, 35 and 36, Tp. 4, R. 3 west and 1, 2, 3, 10, 11 and 12, Tp. 5, R. 3 west be and are hereby formed into a Union School District.*

*2. That the board of arbitrators adjust and determine the rights, claims and liabilities of the above newly formed school district and Myrtle school district respectively, as follows;*

*That the school taxes due for 1905, and the municipal grant due for 1905, for and in respect to those lands detached from the Myrtle school district, namely sections 27 and 34, Tp. 4, R. 3 west and sections 3 and 10, Tp. 5, R. 3 west and which are to form part of the previously mentioned newly formed school district are to be collected by and shall remain the absolute property of the Myrtle school district.*

3. That the previously mentioned newly formed school district shall not be liable for any of the liabilities, debentures indebtedness, or any debt whatsoever incurred or due by the school district of Myrtle, but all such debts, liabilities and debentures indebtedness shall be paid by the said school district of Myrtle.

4. That the school house and furniture in the same, situate in the school district of Myrtle, and all monies goods and property belonging now to the school district of Myrtle, be and remain the absolute property of the said school district of Myrtle.

5. That the said determination of the school district and the formation of the said Union School District take effect immediately.

6. That the costs of this celebration shall be apportioned as follows:

The municipality of Stanley shall pay J. J. W. J. \$650, and Mrs. Geo. Parham \$300.

The municipality of Dufferin shall pay J. A. L. Young, \$14.05.

Dated at Roland, Manitoba, this 30th day of August, 1905.

Signed { A. L. Young,  
W. J. Horvath,  
George Parham.

## WOODVALE SCHOOL S. D. #350

(sec. 2-5-3)

October 18, 1905

from Living Gold



Woodvale School on Section 2-5-3W.

By-law of the school trustees of the "School District of Woodvale", No. 350 for the purpose of borrowing the sum of one thousand five hundred dollars (\$1500.00) and of issuing debentures therefor. The credit of the school district, for the purpose of erecting and furnishing a school building for Woodvale District.

Meeting of the S. D. of Woodvale assembled at the village of Myrtle in the Municipality of Dufferin, in the province of Manitoba, A. D. October 18, 1905.

John Anderson — chairman.

Wilford T. Harrison — Sec.-Treas.

Teachers — Mr. Lamb lived at Henry Currans, Flora Hennan, Miss Alice Campbell, Edith Coates, Anderson, Hubert Bond, Lena.



Woodvale School (later UGG house in Kane) just before dismantling in 1996.

September 20th, 1917 Myrtle School re-opened with Miss Edith Martin and Miss Winnie Cameron of Roland in charge. The attendance at Myrtle is slightly augmented by the pupils of Woodvale School, which has not been re-opened as the trustees were unable to secure the services of a teacher.

## QUEEN CENTRE SCHOOL

by E. H. Groening

Information on the Queen Centre School has been difficult to collect. Most of the people involved are no longer around and many records with the Department of Education only go back as far as 1915. Some of the material used in this report is from the Provincial School Records and some is from older people who were involved in the history of the school. Since much of the latter is of oral source, it may be subject to correction.

The Queen Centre School District No. 1219 was formed November 29, 1902 by by-law No. 126 of the Municipality of Morris, according to the Provincial School Records as supplied by courtesy of Ali Lebtog, one of the administrators. The school was located on the western side of Section 29-4-2W. In about 1911, it was moved to the north-west corner of Section 20-4-2W.

No records are available of the first decade. However, most of the names of the teachers and the years they taught,

have been recovered for the last half of the school's duration. A new school was built in 1917 or about on the same school grounds, by a well-known carpenter of the time, Herman Zehrvoegel, and the old school was converted to a teacherage.



*Queen Centre School - 1920.*

*Pictured Walter and Ed Groening, Clairmont and Ivan Crouch, Herman Dyck, Dora and Mary Groening, Annie Dueck.*

In the school year, 1911-12, Isaac Dyck was teacher. The next two years the teacher was Gerhard G. Wiebe. In 1914-15, Anna Nickel, a young lady from Rosenfeld taught. Miss Nickel is remembered as a fine teacher by some of her former students. She later married a certain Henry Friesen. Mary Loewen, a cousin of Mrs. Diedrich Heppner of Lowe Farm, was teacher in 1915-16. In 1916-17, Cornelius W. Wiebe, a prospective medical student, was teacher. C. W. Wiebe later became chief physician and surgeon in the Winkler community for more than fifty years. In 1917-18, Henry Wiebe, after all these years, is still remembered by some of his students as an excellent teacher. No records are on hand for the last few years for reasons obvious in the following paragraph.

Some of the family names in attendance as recalled by former pupils are: Dyck, Penner, Funk, Groening, Crouch and perhaps Schnelby and Hurt. The school was located on the northern edge of the West Reserve for Mennonite settlers. In the early school years, there likely were a number of other non-Mennonite family names on the register.

In 1918, some families in the community ventured on a project which was short-lived. The motives involved relate to the long time custom of school control by Mennonites, the Federal privileges granted and the Provincial Rights of the B.N.A. Act of 1867, on which further comments space does not allow. Nevertheless, the same carpenter who shortly before had built the Queen Centre School was hired to build a private school only one-and-a-half miles east of Queen Centre on section 21-4-2 W.

The first teacher was Isaac Epp. The next teacher was

David Schulz, a young scholar of the time. Schulz proved to be a strict disciplinarian with strong leadership abilities. He later became Bishop of a number of churches in southern Manitoba, a position he held for some forty consecutive years. Another teacher and perhaps the last was Marie Wiens, from a well-known Lowe Farm family. She later became a nurse and is presently residing in Winnipeg. This private school rivalled Queen Centre for pupil count and may in part have been the cause of the discontinuation of both schools. This structure of 1917 was destroyed by the owner in the mid-seventies after it had served as a granary for many years.

On August 5, 1919, the Queen Centre School District and the private school were consolidated with portions of Neufeld No. 1580, Bloomfield No. 793, Kronsweide No. 1030, and the Woodvale No. 1350 by an Award of Arbitrators to form the Kane Consolidated School District No. 2006. This marked the end of one-roomed schools in the western part of the Municipality of Morris. Some nine hundred one-roomed schools in the province retained their existence for another forty years, until the implementation of Unitary Division in 1959.

IN THE MATTER OF THE PETITION OF JAS. I. MILLER AND TWENTY FIVE OTHERS  
praying for the formation of a  
consolidated union school district  
at Kane, Manitoba.

To the Department of Education, and  
To the Councils of Roland and Morris Municipalities:-

Sirs:-

We your arbitrators appointed under the provisions of section 123 of the Public Schools Act of Manitoba, met at Myrtle on Friday, August 1st, 1919, and after hearing all interested in the petition, decided and determined to award as follows:-

1. That the following lands be included in a consolidated school district of Kane, viz.,  
All of secs 19 to 22, inclusive situated in Twp. 4, Range 2 west.  
" " " 27 to 34 " " " " " 4 " 2 " "  
" " " 3 to 10 " " " " " 5 " 2 " "  
" " " 15 to 17 " " " " " 5 " 2 " "  
The east  $\frac{1}{2}$  sec. 18 " " " " " 5 " 2 " "  
All of secs. 24, 25, and 36 " " " " " 4 " 3 " "  
All " " 1 and 12 " " " " " 5 " 3 " "
2. That the following lands be and hereby are detached from the respective school districts indicated.  
From Queen Centre all its lands excepting the west  $\frac{1}{2}$  of sec. 18 in Township 5, Range 2 west.  
From Neufeld sections 10, 15, and 16 in Twp. 5, Range 2 west.  
From Kronsweide, secs. 22, and 27, in Twp. 4, Range 2 west.  
From Bloomfield, sec. 24 Twp. 4, Range 3 west.  
From Woodvale, secs. 25, and 26 in Twp. 4, Range 3 west, and also secs. 1, and 12 in Twp. 5, Range 3 west.
3. That the expenses of this arbitration be paid as follows:-  
Morris municipality to pay the secretary of this board the sum of \$34.40, and Roland to pay Mr A. Allison, the sum of \$9.00.
4. That this be taken as the award and that it take effect upon the approval of the Department of Education.

Signed at Myrtle, Man, this  
First day of August, 1919.

Corbett Locke,  
Alvin Chisholm,  
R. Goulet, Arbitrators  
Andw. Allison,  
W.C. Hartley

Carried to be a correct copy of the award.

Carman, Man. Aug. 5th 1919.

Sec. Arbitrators.

Secs. 17 and 18 -Twp 5, R 2 West, formerly belonged to Queen Centre.



## KANE CONSOLIDATED S.D. NO. 2006

by E. H. Groening



*Kane Consolidated School built in 1920.*

Prior to the formation of the Kane Consolidated S.D., there were at least two one-room public schools in the area, not including Rose Farm which in the early years of the Unitary Division was annexed to the Kane area. One of the one-roomed public schools was in the hamlet of Kane. The other was Queen Centre, located one mile east and two miles south of Kane. Queen Centre School was actually replaced by a second school on the same location shortly before the formation of the consolidated area. In addition, there was a small private school which was in operation for a short time.

There were two schools built during the time of consolidation. The first was built in 1920, which was replaced in 1957 with a four-roomed school. The original school of 1920, was opened in September of that same year with only about thirteen pupils. The Mennonite names began to appear in the school records in the spring of 1921. It was constructed of brick and lumber, with a roof of metal shingles. It had two classrooms on the main floor, science and supply room, plus a number of anterooms. Half the basement was auditorium with fairly large windows, panelled and plastered walls and ceiling, with a hardwood floor. The rest of the basement was partitioned off into smaller rooms such as furnace, fuel supply, water, and various other utility rooms.

The auditorium was used for recreation such as socials, programs, or concerts. On rainy days and in the winter, pupils were allowed to play games in the basement. Physical drills were given in the auditorium, as required on the program of studies. Later in the 1930's, the auditorium was partitioned into classrooms for high school, and a woodwork room for lack of room elsewhere.

Pupils coming from the south of Kane were largely from Mennonite families, and made up 2/3 of the pupil count. The others were of Scottish, Irish, English, and American descent. United, they were recognized as English. The multicultural background in the early years called for some adjustment, particularly on the part of the Mennonites who were used to a more separate lifestyle.

The early teachers were largely English, but seldom if ever showed any partiality. Except for small minorities on either side, the majority of pupils soon mixed fairly well.

Transportation...all the pupils in the district, which was roughly 35 square miles, were brought in by five or six vans. Later when Rose Farm was added, there were as many as nine vans. In the early days, vans were horse drawn. Some of the larger van routes were up to seven miles or more depending on how much back and forth they had to travel to pick up the children. In winter, some pupils left at dawn, and returned at dusk, as some vans would be on the road for three hours or more per day, depending on the weather. In winter on stormy days, the van drivers showed great qualities of faithfulness. Sometimes they froze their faces sticking out their heads in a blizzard to keep to the trail; in all the years of consolidation, no serious accident occurred.

Once on a field day, a runaway team on a van circled around the school yard among the crowd of children and adults on full gallop. A man from the crowd, at the risk of his life, sprang to the bridles, and dragged the horses to a stop.

The schoolhouse was also the place where many social events took place. There were literary programs, musical concerts, dramas and debates which were always well attended. One time after the Chicago World Fair, a Manitoba teacher showed his own film to a large audience.

The Christmas concerts were always big events. A month or more of preparation went into the plays and other items. A few days before Christmas, the whole community and a number of visitors besides, came out to see the performance. There was never enough room for the crowd. Once a year there was a Field Day in Carman, Elm Creek or Roland, which was attended by thousands of people (an estimated number was 5,000). There were parades, flags, and cheers from the many schools participating. The schools competed in baseball and other activities. The stories and some of the competition sound like legends of old. Another of the yearly events was the end of the year school picnic. This was attended by young and old - everyone participating in the races, ball games, and of course the socializing that went with it, made it a very important part of the school year.

In the 50's, a number of plans were proposed at annual meetings to renovate the old school by building an addition to it, but a by-law to that effect was defeated. Eventually, favour was granted for a new school by the voters and the Minister of Education. In 1957, a new four-classroom school was built with debentures for seven years, and reserve fund, plus a newly acquired government grant. The old brick structure was dismantled the following year.





*The new Kane School in 1959.*



*The former Kane Community Centre (and school) in 1999.*



*The former Kane school yard in 1999, when it became a hobby ranch for owners Henry and Tina Klassen.*



## REGISTRATION AT KANE SCHOOL 1920-21

**TEACHERS:** Rose Barnes (September - January)  
James R. Simms (February - April)  
C. W. Wiebe (May-June)

**TRUSTEES:** James Handlon (chairman)  
Lorne C. Wilkin (secretary/treasurer)  
Mr. Gurney  
Mr. George Miller

### STUDENTS:

Grade I: Byllie Furstenau, James Handlon, Vera Olson, Paul Schnebly, Kenneth Hurt, Mayna Olson, Mary Penner, Anna Funk, Marie Dyck, Howard Brummie, Bernard Penner, Cornelius Enns, David Penner.

Grade II: Theodore Cranew, Gladys Hodge, John Penner, Greta Groening, Nora Groening,

Willie Unrau, Eddie Groening, Susie Wiebe, Henry Penner, Randall Groening, Cornelius Wiebe, Carrie Groening, Mary Groening.

Grade III: Leona Cranew, Dean Cutlip, Ruth Brummie, Marie Hildebrandt, Sarah Funk, Henry Unrau, Lena Dyck, David H. Penner, Abe Dyck.

Grade V: David Blatz, Ruth Schnebly.

Grade VII: Bert Olson.

Grade VIII: William Cutlip, Noel Olson.

Grade IX: Eldon Simms.

Grade X: Beatrice Balutude.

The records show that the students often were in more than one grade during the year. They also attended a month and then were absent for a few months.

## A PARADE OF VANS



*School's out! Vans of the 20's.*



*Jim Cowie and his van in the 30's.*

**REGISTRATION AT KANE SCHOOL 1921-22**

**TEACHERS:** Room I: Blanche H. Molloy  
(September - December)  
C. S. Daintry (January - July)  
Room II: J. R. H. Simms  
(September - December)  
Bernice M. Daintrey  
(January - July)

**TRUSTEES:** Mr. Anderson (chairman)  
Mr. Gurney  
Mr. James Handlon  
Mr. George Miller  
Mr. Lorne Wilkin (secretary/treasurer)

**STUDENTS:**  
Grade I: Laura Cutlip, James Handlon, Kenneth Hurt, Greta Groening, Susie Wiebe, Howard Brummie, Mary Dyck, Randall Groening, Willie Unrau, Annie Funk, Eddie Groening, John Penner, William Cowie, Phyllis Hergesheimer, John H. Penner, Gertrude Giesbrecht, Eddie Wiebe, Nora Groening, Mary Penner, Cornelius Enns, Emmie Groening.

Grade II: Paul Schnebly, Mary Groening, Carrie Groening, David Penner, Henry Penner, Bernard Penner.

Grade III: Theodore Cranen, Abe Dyck, Mary Hildebrand, Henry Unrau, Sarah Funk, David H. Penner.

Grade IV: Ruth Brummie, Lena Groening, David Unrau, Frank Groening, Bernard Funk, John Hildebrandt, Abram Groening, Leona Cranen, Dora Wiebe, Lena Dyck, Dean Cutlip, Henry Unrau.

Grade V: Walter Groening, Theodore Groening, Bernard Penner, Dora Wiebe.

Grade VI: Hazel Hurt, Estol Hurt, Beatrice Baltitude, Ruth Schnebly, Tina Wiebe, Edward Groening, Dora Groening, Lena Funk, Peter Funk.

Grade VII: David Blatz, Bernard Penner, Abram Groening.

Grade VIII: Frederick Kirk, Clifford Kirk.

Grade IX: Eldon Simms.

School closed last week of January and all of February owing to illness - mumps.



*The vans in the 40's were sporting 'opera' windows and spoke wheels.*



*The snowshoes are on for winter.*

## REGISTRATION AT KANE SCHOOL 1922-23

**TEACHERS:** Room I: A. M. Laine  
Room II: Chas. F. Laine

**TRUSTEES:** Mr. James Handlon (chairman)  
Mr. Lorne Wilkin (secretary/treasurer)  
Mr. George Miller  
Mr. Thomas Kirk

### STUDENTS:

Grade I: Eddie Wiebe, Julia Giesbrecht, Phyllis Hergesheimer, Willie Cowie, Emmie Groening, Nora Groening, Detray Groening, Ernie Burr, Dorothy Miller, Paul Hergesheimer, Mary Handlon, Mary Dyck, Mary Unrau, Lena Groening, Clara Dyck, Tina Penner, Bernard Hamm, Lorraine Burr, Abram Esau.

Grade II: Randall Groening, Eddie Groening, James Handlon, Lena Esau, John Penner.

Grade III: Howard Brummie, Susie Wiebe, Paul Schnebly, William Unrau, Greta Groening, Annie Funk, Kenneth Hurt, Carrie Groening.

Grade IV: Marie Groening, Henry Unrau, Henry Esau, Helen Dyck, Abram Dyck, David Penner, Nellie Tinski.

Grade V: Ruth Brummie, Theodore Cranen, David Unrau, Lena Groening, Bernard Funk, Frank Groening.

Grade VI: Leona Cranen, Barbara Miller, Dora Wiebe, Theodore Groening, Walter Groening, Jacob Groening.

Grade VIII: Tina Wiebe, Isabelle Kirk, Ruth Schnebly, Hazel Hurt, Estelle Hurt, Edward Groening, Bernard Penner, Abram Groening, Dora Groening, Nora Funk, Peter Funk.



*The Frank G. Blatz kids (Anne, Frank, Jake) home from school.*



*Alex White and bis crew.*



**REGISTRATION AT KANE SCHOOL 1923-24**

**TEACHERS:** Room I: A. M. Laine  
Room II: Chas. F. Laine

**TRUSTEES:** Mr. Thomas Kirk (chairman)  
Mr. Lorne Wilkin (secretary/treasurer)  
Mr. James Handlon  
Mr. O. Anderson  
Mr. George Miller

**STUDENTS:**

Grade I: Lorraine Burr, Paul Hergesheimer, Marvine Brummie, Netta Friesen, Peter Friesen, Lena Groening, Detray Groening, Clara Dyck, Bernard Hamm, George Hamm, Abe Esau, Joyce McQuade, Herman Moore, David Giesbrecht.

Grade II: Tena Penner, Dorothy Moore, Clarence Moore, Julia Giesbrecht, Phyllis Hergesheimer, Willie Cowie, Ernie Burr, Eddie Wiebe, Nora Groening, Emmie Groening, Mary Handlon, Mary Unrau.

Grade III: Lena Esau, John Penner, James Handlon, Randall Groening.

Grade IV: Susie Wiebe, Eddie Groening, Greta Groening, Annie Funk, Willie Unrau, Paul Schnebly, Kenneth Hurt.

Grade V: Mary Groening, Carrie Groening, Henry Esau, Henry Unrau, David Penner, Helen Dyck, Lena Groening, Bernard Funk, David Unrau, Frank Groening.

Grade VI: Ruth Brummie, Walter Groening, Theodore Groening.

Grade VII: Barbara Miller, Dora Wiebe, Edward Groening, Jacob Groening.

Grade IX: Ruth Schnebly, Estelle Hurt, Isabelle Kirk, Hazel Hurt, Howard Burr.



*Henry Kebler in style with his van in the 50's.*



*Henry Doell picking up Wilma and Don Schellenberg.*

## REGISTRATION AT KANE SCHOOL 1924-25

**TEACHERS:** Room II: C. G. Williamson

**TRUSTEES:** Mr. O. Anderson (chairman)  
Mr. L. C. Wilkin (secretary/treasurer)  
Mr. T. Kirk  
Mr. H. B. Wiebe  
Mr. J. Handlon

### STUDENTS:

(There are no records available for Grades I-IV)

Grade V: Kenneth Hurt, Susie Wiebe, Annie Funk, Carrie Groening, Greta Groening, Eddie Groening, Willie Unrau, Mary Groening, Henry Unrau, Henry Esau, David Unrau, Elizabeth Chapman.

Grade VI: Bernard Funk, Theodore Groening, Frank Groening, David Unrau, Jeannie Lumsden, Alice Anderson.

Grade VIII: Nora Funk, Peter Funk, Lena Funk, Percy Rooke.

Grade IX: Isabelle Kirk, Estelle Hurt, Hazel Hurt.

### VAN DRIVERS:

1. S. H. McQuade
2. H. B. Wiebe
3. Wm. Gortzen
4. Peter P. Funk



*Ben Wiebe 'unloading' at the Dan Penner home.*



*A. J. Wiebe and his truck van in the 60's, with the Groenings, Thiessens and Borns.*



*Jake Born's van in 1959. Tom Kirk, Harold Krabn, Judy Neufeld, Margaret Born, Gina Neufeld, Donna Kirk, Mary-Ann Krabn.*

## REGISTRATION AT KANE SCHOOL 1925-26

**TEACHERS:** Room I: Blanche H. Molloy  
Room II: Mary J. Parkins

**TRUSTEES:** Mr. T. Kirk (chairman)  
Mr. L. C. Wilkin (secretary/treasurer)  
Mr. H. B. Wiebe  
Mr. O. Anderson  
Mr. J. Handlon

### STUDENTS:

Grade IA: Lena Groening, Robert Lumsden, Bernard Groening, George Groening, Elvera Groening, Abe Thiessen, Susie Thiessen, George Hamm.

Grade IB: Annie Shlothauer, Anna Schapansky, Tina Thiessen, Jacob Penner, Mavis Webster, Martha Geswein, Gladys Chapman, David Froese.

Grade IC: Emma Shlothauer, Margaret Esau, Olive Moore, Ellen Groening.

Grade IIA: Joyce McQuade, Irene Walsh, Herman Moore, Detray Groening, Willie Froese.

Grade IIB: Bernard Hamm, Calvin Moore, Netta Unrau, Abe Esau, Stanley Crouch.

Grade III: Margaret Lumsden, Tina Penner, Eddie Wiebe.

Grade IV: Margaret Walsh, Mary Handlon, Dorothy Moore, Clarence Moore, Nora Groening, Emmie Groening, Mary Unrau.

Grade V: James Handlon, Randall Groening, John Penner, Kenneth Hurt, Lena Esau, Dorothy Chapman, Lena Froese.

Grade VI: Mary Parkins, Winifred Parkins, Greta Groening, Annie Funk, Susie Wiebe, Carrie Groening, Eddie Groening, Willie Unrau, Mary Groening, Henry Unrau, David Penner, Henry Esau, Elizabeth Chapman.

Grade VII: Jean Lumsden, Alice Anderson, David Unrau.

Grade VIII: Jacob Groening, Walter Groening, Irene Webster, Bernard Penner.

Grade IX: Celista Anderson, Valerie Anderson, Peter Funk.

Grade X: Isabelle Kirk, Hazel Hurt, Estelle Hurt.

### VAN DRIVERS:

1. S. H. McQuade
2. H. B. Wiebe
3. Jake Groening
4. P. Flanigan



*Peter H. Penner with the ever popular 'panel' van.*



*A scramble for the van at 4 o'clock.*



*Jake Wiebe and his 'puddle jumper' van picking up Chris Dyck.*



**REGISTRATION AT KANE SCHOOL 1926-27**

**TEACHERS:** Room I: Norma Miller  
Room II: Mary J. Parkins

**TRUSTEES:** Mr. T. Kirk (chairman)  
Mr. L. C. Wilkin (secretary/treasurer)  
Mr. O. Anderson  
Mr. J. Handlon  
Mr. H. B. Wiebe

**STUDENTS:**

Beginners: Cameron Kirk, Mary Hamm, Alice Moore, Herman Groening, Dorothy Cousins, Johnny Funk, Gertrude Hildebrandt, David Giesbrecht, Emma Shlothauer, Annie Schlothauer.

Grade I: Helen Hudson, Tina Thiessen, Olive Moore, Annie Schapansky, Helen Groening, Eddie Groening, Eddie Unrau, Jake Penner, Margaret Esau, George Hamm, Abe Thiessen.

Grade II: Robert Lumsden, Bernard Groening, Susie Thiessen, Elvera Groening, Stanley Crouch.

Grade III: Calvin Moore, George Groening, Beryl Cates, Bernard Hamm, Abe Esau, Netta Unrau, Herman Moore, Irene Hamm, Irene Walsh, Joyce McQuade, Cyrie Fitzgibbon, Detray Groening, Everett Cates.

Grade IV: Margaret Lumsden, Lena Penner, Gertrude Giesbrecht, Lizzie Hiebert.

Grade V: Mary Handlon, Margaret Walsh, Dorothy Moore, Nora Groening, Emmie Groening, Clarence Moore, Lena Esau, Mary Unrau.

Grade VI: Bethel Cates, James Handlon, Randall Groening, John Penner, Cora McDougal, Kenneth Hurt, Mary Hildebrandt.

Grade VII: Greta Groening, Willie Unrau, Mary Groening, David Penner.

Grade VIII: Winifred Parkins, Mary Parkins, Annie Funk, Eddie Groening, Jeannie Lumsden, Alice Anderson.

Grade X: Hazel Hurt, Estelle Hurt, Isabelle Kirk.

**VAN DRIVERS:**

1. S. H. McQuade
2. J. Lumsden - A. Dyck
3. Jake Groening
4. P. Penner



*A relic of the past! 1979.*

## REGISTRATION AT KANE SCHOOL 1927-28

**TEACHERS:** Room I: F. Alywin Anderson  
Room II: Melvin T. Woods

**TRUSTEES:** Mr. A. M. Anderson (chairman)  
Mr. Joe White  
Mr. T. Kirk  
Mr. J. Handlon  
Mr. David Unrau  
Mr. C. E. Walsh (secretary/treasurer)

### STUDENTS:

**Beginners:** Mary Warkentine, Clara Groening, Dora Giesbrecht, Herman Groening, Margaret Harder, Diedrich Klassen, Alex White, Frank White, Jake Hildebrand, Mary Janzen, Dave Groening, John Funk, Frances Tindle.

**Grade I:** Cameron Kirk, Alice Moore, Lena Groening, Annie Schapansky, Lizzie Kehler, Willie Hiebert, Dave Giesbrecht, Tina Thiessen, Peter Harder, Ray Cates, Gertrude Hildebrand, Helen Groening.

**Grade II:** Margaret Esau, Olive Moore, Eddie Unrau, Jake Penner, George Groening, Abe Thiessen, Mary Harder, Abe Klassen, Holm Janzen.

**Grade III:** Beryl Cates, Bernard Groening, Susie Thiessen, Lena Klassen, Elvera Groening.

**Grade IV:** Joyce McQuade, Irene Walsh, Everett Cates, Herman Moore, Calvin Moore, Nettie Unrau, Abe Esau, Detray Groening, John Klassen, Tina Harder.

**Grade V:** Tina Penner, Gertie Giesbrecht, John Wiens, Lena Kehler.

**Grade VI:** Dorothy Moore, Marge Walsh, Clarence Moore, Mary Unrau, John Penner, Nora Groening, Emmie Groening, Henry Esau, John Kehler.

**Grade VII:** Randall Groening, Bethel Cates, Willie Unrau.

**Grade VIII:** Greta Groening, Dave Penner.

**Grade IX:** Alice Anderson.

### VAN DRIVERS:

1. S. H. McQuade
2. J. Esau
3. A. Anderson
4. H. Anderson
5. E. Cates

The Kane School was closed for the month of September 1928, due to an epidemic of Infantile Paralysis.



*Hockey in the 30's. Tommy White, Cornelius (Neil) Thiessen, Harold Penner, Alex White, Cameron Hyde.*



*The Kane Rascals! Cameron Hyde, H. Suderman, Dave Groening, Alex White, Henry Thiessen, Bill Toews, Frank White, Walter Toews, Tom White.*

**REGISTRATION AT KANE SCHOOL 1928-29**

<b>TEACHERS:</b>	Room I: F. Alywin Anderson Room II: Melvin T. Woods
<b>TRUSTEES:</b>	Mr. Thomas Kirk (chairman) Mr. Chas. E. Walsh (secretary/treasurer) Mr. Joe White Mr. James Handlon Mr. David Unrau Mr. Oliver Anderson
<b>STUDENTS:</b>	
Beginners:	Tillie Groening, Martha Cowie, Jake Unrau, Annie Harder, Detray Hildebrand.
Grade I:	Dave Groening, Alex White, Frank White, Dora Giesbrecht, Clara Groening, Herman Groening, Margaret Harder, Liddie Groening, Annie Thiessen, Jake Hildebrandt, Mary Warkentin, John Funk.
Grade II:	Lena Groening, Annie Schapansky, Dave Giesbrecht, Tena Thiessen, Peter Harder, Gertrude Hildebrand, Helen Groening, Olive Anderson, Willie Hiebert, Cameron Kirk, Ray Cates.
Grade III:	Jake Penner, George Groening, Margaret Esau, Mary Harder, Violet Cowie, Olive Moore.
Grade IV:	Beryl Cates, Bernard Groening, Susie Thiessen, Elvera Groening, Abe Thiessen, Eddie Unrau.
Grade V:	Irene Walsh, Joyce McQuade, Nettie Unrau, Calvin Moore, Detray Groening, Everett Cates, Gertie Giesbrecht, Frank Kehler, Abe Esau.
Grade VI:	Tina Penner, Emmie Groening, John Wiens.
Grade VIII:	Marge Walsh, Dorothy Moore, James Handlon, Mary Handlon, Theodore Groening, Bernard Funk, Carrie Groening, John Penner.
Grade IX:	Bethel Cates, Walter Groening, Annie Funk.
<b>VAN DRIVERS:</b>	
	1. Abe Dick 2. J. Hildebrand 3. J. White 4. T. W. Kirk 5. M. Johnston



*Kane Champs at Carman, 1937 and 1938.*

There are no registration records for the school year, 1929-30.



## REGISTRATION AT KANE SCHOOL 1930-31

**TEACHERS:** Room I: Sarah Sawatsky  
Room II: Margaret Toews

**TRUSTEES:** no record

### STUDENTS:

**Beginners:** Cameron Hyde, Tommie White, Jake Harder, Ida Thiessen, Mary Thiessen, Johnnie Unrau.

**Grade I:** Ervin Groening, Billie Funk, Rosie Groening, Alma Giesbrecht, Frank Giesbrecht, Tena Banman, Henry Thiessen.

**Grade II:** Martha Cowie, Lora Hiebert, Tilly Groening, Dave Hiebert, Annie Harder, Harold Penner, Abe Banman.

**Grade III:** Annie Thiessen, Clara Groening, Liddie Groening, Dave Groening, Herman Groening, Jake Unrau, Dora Giesbrecht, Margaret Harder, Alex White, Frank White.

**Grade IV:** Jacob Hiebert, Tina Thiessen, Ellen Groening, Martha Geswein, Annie Schapansky, Peter Harder, Dave Giesbrecht, Edna Penner.

**Grade V:** Ray Cates, Anna Hiebert, William Hiebert, John Hiebert, Willie Hiebert, Lena Groening, George Groening, Violet Cowie.

**Grade VI:** Cameron Kirk, John Penner, Jake Penner, Eddie Unrau, Elvera Groening, Susie Thiessen, Bernard Groening, Abe Thiessen, Beryl Cates.

**Grade VII:** Nettie Unrau, Nora Groening, Detray Groening.

**Grade VIII:** Randall Groening, Walter Penner.

**Grade IX:** Marie Handlon, Hugo Penner, Annie Funk, Bernard Funk, Theodore Groening.

**Grade X:** James Handlon.

### VAN DRIVERS:

1. Mr. Heide
2. Mr. Funk
3. Mr. Cowie
4. Mr. Hildebrand
5. Mr. Kirk



*Mr. George Siemens with his two boys; Reynold and Lloyd, 1937.*



*Kane School Picnic, 1938.*

## REGISTRATION AT KANE SCHOOL 1931-32

**TEACHERS:** Room I: Gertrude Hooge  
Room II: Margaret Toews

**TRUSTEES:** Mr. A. Groening (chairman)  
Mrs. L. D. Bruce (secretary/treasurer)  
Mrs. John Toews  
Mr. T. Kirk

### STUDENTS:

**Beginners:** Margaret White, Gladys Fredricksen, Margie Penner, Lizzie Thiessen, Tina Hiebert, Jackie Johnson, John Unrau, Lizzie Neufeld.

**Grade I:** Sadie Penner, Norman Groening, Lizzie Thiessen, Jim Bruce, Tom White, Cameron Hyde, John Unrau, Jake Harder, Lena Klassen, Ida Thiessen.

**Grade II:** Ervin Groening, Henry Thiessen, Elma Hiebert, Rosie Groening, Tena Banman, Abe Banman, Frank Giesbrecht, Billy Funk, Annie Fehr, Jake Neufeld.

**Grade III:** Martha Cowie, Lora Hiebert, Tillie Groening, Harold Penner, Dave Hiebert, Annie Harder, George Neufeld.

**Grade IV:** Harold Penner, Dave Hiebert, John Klassen, Annie Thiessen, Clara Groening, Liddie Groening, Dave Groening, Jake Unrau, Alex White, Frank White, Margaret Harder, Herman Groening, Dora Giesbrecht, Katy Neufeld.

**Grade V:** Tina Thiessen, Ellen Groening, Jake Hiebert, Peter Harder, Ray Cates, Dave Giesbrecht, Don Cates.

**Grade VI:** George Groening, John Hiebert, William Hiebert, Willie Hiebert, Jake Penner, Lena Groening, Edna Penner, Cornie Banman, Mary Dobrowelski, Violet Cowie.

**Grade VII:** John Penner, Cornie Hiebert, Eddie Unrau, Elvera Groening, Cameron Kirk, Beryl Cates, Abe Thiessen.

**Grade VIII:** Nora Groening, Detray Groening, Everett Cates, John Dyck, John Penner.

**Grade IX:** Emmie Groening, Walter Penner.

### VAN DRIVERS:

1. J. E. Hiebert
2. W. Hiebert
3. A. Thiessen
4. C. Kirk
5. J. Cowie



*Evelyn Russell's Beginner's Class in 1939.  
Mary Suderman, Annie Blatz, Jessie Giesbrecht, Lenora Hyde,  
Wilma Toews, Orvan Penner, Johnny Penner.*



*Off to see the King and Queen in J. J. Toews' Diamond T,  
May, 1939. Frank White, Harold Penner, Abe Banman.*

**REGISTRATION AT KANE SCHOOL 1932-33****TEACHERS:** Room II: J. H. Giesbrecht**TRUSTEES:** Mr. A. Groening  
Mr. T. Kirk  
Mrs. L. D. Bruce (secretary/treasurer)**STUDENTS:** There are no records of grades I-IV.

Grade V: Annie Thiessen, Dorothy Giesbrecht, Margaret Harder, Clara Groening, Liddie Groening, Harold Penner, Herman Groening, Jake Unrau, David Groening, Alex White, David Hiebert, David Thiessen, Frank White.

Grade VI: Violet Cowie, Ellen Groening, Ray Cates, Jake Hiebert, Tina Thiessen, David Brown, Cornie Thiessen.

Grade VII: Edna Penner, George Groening, John Hiebert, Lena Groening, Willie Hiebert, Jake Penner.

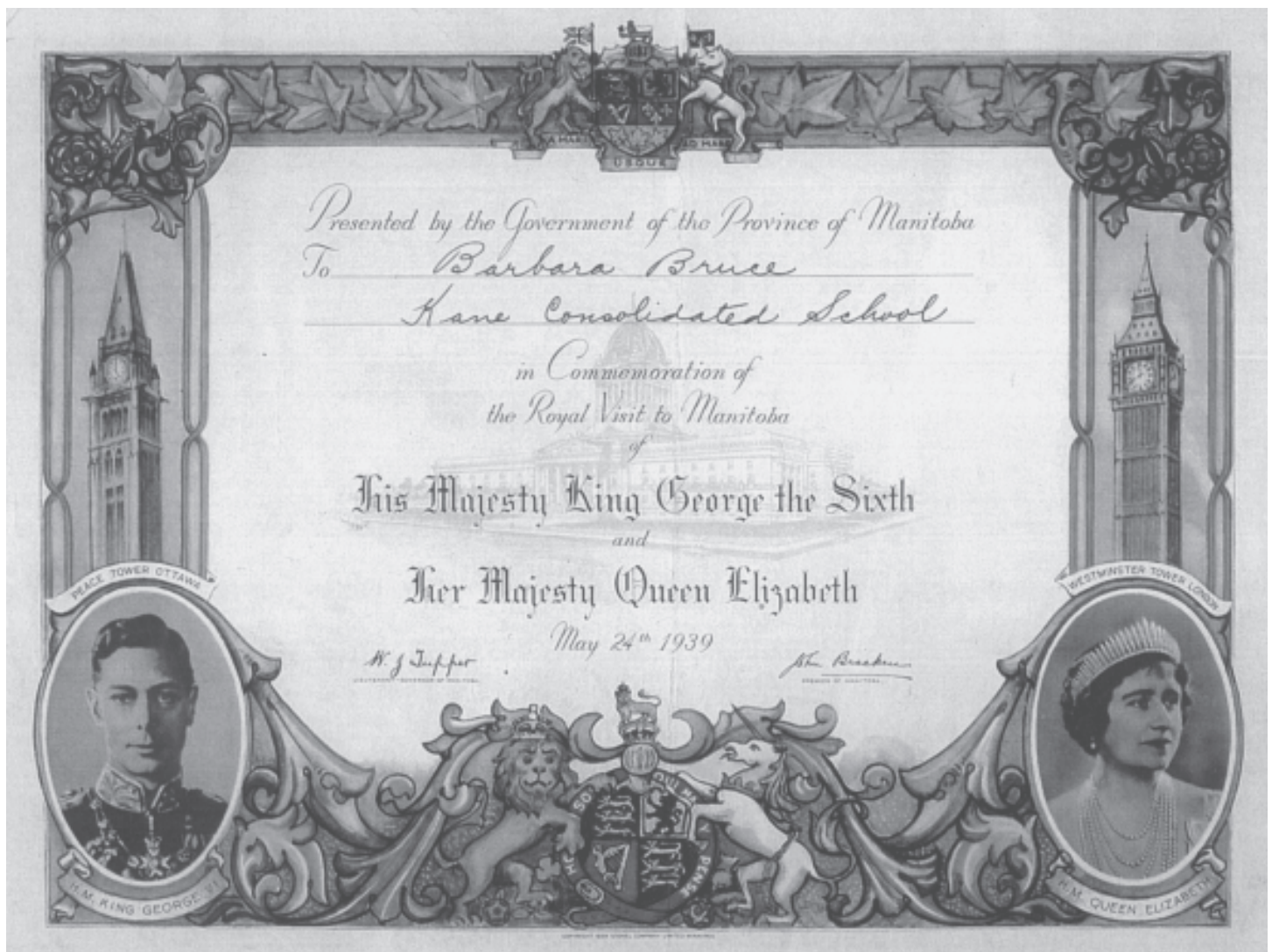
Grade VIII: Cameron Kirk, Eddie Unrau, John Penner, Beryl Cates, Elvera Groening, Abram Thiessen.

Grade IX: Cornie Hiebert.

Grade X: Emmie Groening, Walter Penner, Hugo Penner, Eddie Groening.

**VAN DRIVERS:**

1. Mr. Banman
2. Mr. Cowie
3. Mr. Hiebert
4. Mr. Penner
5. Mr. Thiessen

*The Royal Visit, May, 1939.*



**REGISTRATION AT KANE SCHOOL 1933-34**

**TEACHERS:** Room I: Mabel M. Anderson  
Room II: J. H. Giesbrecht

**TRUSTEES:** Mr. J. B. Davidson (chairman)  
Mrs. L. D. Bruce (secretary/treasurer)  
Mr. A. A. Groening  
Mr. P. F. Penner  
Mr. T. W. Kirk  
Mr. Abe Hyde

**STUDENTS:**

**Beginners:** Cleona Hyde, Lizzie Penner, Sadie Thiessen, Jacob Bergen, Hilda Giesbrecht.

**Grade I:** Barbara Bruce, Lillie White, Ivy Giesbrecht, Mary Banman, Margie Penner, John Unrau, Jake Unrau, Verna Rempel, Norman Groening, Susie Bergen, Jake Coombe, Mary Hiebert, Gertrude Harder.

**Grade II:** Margaret White, Gladys Fredricksen, Tina Hiebert, Sadie Penner, Lizzie Thiessen, Herman Bitz, Ida Thiessen.

**Grade III:** Tom White, Cameron Hyde, Jim Bruce, Pete Thiessen, Mary Thiessen, John Unrau, Jake Harder, Willie Rempel.

**Grade IV:** Ervin Groening, Elma Hiebert, Frank Giesbrecht, Tina Banman, Rosie Groening, Henry Thiessen, Abe Banman, Tina Bergen, Florence Rempel.

**Grade V:** Martha Cowie, Tillie Groening, Lora Hiebert, Annie Harder, Herman Groening.

**Grade VI:** Annie Thiessen, Liddy Groening, Clara Groening, Jake Unrau, Harold Penner, Alex White, David Hiebert, David Groening, Margaret Harder, David Thiessen, Dorothy Giesbrecht, Henry Bergen, Frank White.

**Grade VII:** Ray Cates, Tina Thiessen, Ellen Groening, Jake Hiebert, Bernard Groening.

**Grade VIII:** Jake Penner, Edna Penner, Willie Hiebert, Cornie Banman, George Groening, John Hiebert.

**Grade IX:** Cameron Kirk, John Penner, Elvera Groening, Beryl Cates, Nora Groening, Abram Thiessen, Randall Groening.

**VAN DRIVERS:**

1. Cornelius Banman
2. James Cowie
3. Gustave E. Penner
4. William Reimer
5. Abram Thiessen



*Kane school body in May, 1939 with Principal Mr. G. G. Siemens (top left) and Miss Evelyn Jack (top right).*

**REGISTRATION AT KANE SCHOOL 1934-35**

**TEACHERS:** Room I: Mabel M. Anderson  
Room II: G. G. Siemens

**TRUSTEES:** Mr. J. B. Davidson (chairman)  
Mr. G. Penner (secretary/treasurer)  
Mr. P. E. Penner  
Mr. A. Hyde  
Mr. A. Groening

**STUDENTS:**

**Beginners:** Rosalie Thiessen, Jean White, Agnes Bergen, John Hiebert, Eddie Banman, Arthur Toews, Annie Unrau.

**Grade I:** Cleona Hyde, Lizzie Penner, Sadie Thiessen, Jacob Bergen, Hilda Giesbrecht, Gertrude Harder, Henry Harder, Edna Hiebert.

**Grade II:** Lillie White, Mary Banman, Margie Penner, Ida Thiessen, Susie Bergen, John Unrau, Jake Unrau, Norman Groening, Verna Rempel, Barbara Bruce.

**Grade III:** Margaret White, Gladys Fredricksen, Tina Hiebert, Sadie Penner, Lizzie Thiessen, Herman Bitz.

**Grade IV:** Tom White, Cameron Hyde, Pete Thiessen, John Unrau, Mary Thiessen, Jake Harder, Willie Rempel, Jim Bruce.

**Grade V:** Ervin Groening, Henry Thiessen, Tina Bergen, Elma Hiebert, Lena Banman, Rosie Groening, Florence Rempel, Frank Giesbrecht, Abe Banman.

**Grade VI:** Tillie Groening, Martha Cowie, Lora Hiebert, Annie Harder, Herman Groening.

**Grade VII:** Frank White, Alex White, Jake Unrau, Harold Penner, Annie Thiessen, Clara Groening, Liddie Groening, Ray Cates, David Thiessen, Dave Groening, David Hiebert, Dorothy Giesbrecht.

**Grade VIII:** Ellen Groening.

**Grade IX:** Edna Penner, Willie Hiebert, Jake Penner, John Wiebe, Cornelius Banman.

**Grade X:** John Penner, Cameron Kirk, Elvera Groening, Beryl Cates.

School was closed for one week in January of 1935 due to Diphtheria.

Several hundred trees were planted in 1935.



*Miss Tina Warkentine with her grade 3&4 class in 1942, at the Kane Store.*



*Hockey in 1945-46 with coach Dick Hean (Sr.) standing by net, Dick Hean (Jr.) in goal, Tom Hean, John Penner and Willie Klassen in front row.*

## REGISTRATION AT KANE SCHOOL 1935-36

<b>TEACHERS:</b>	Room I: Mabel M. Anderson Room II: G. G. Siemens
<b>TRUSTEES:</b>	Mr. J. B. Davidson (chairman) Mr. G. E. Penner (secretary/treasurer) Mr. F. F. Thiessen Mr. A. A. Groening Mr. A. H. Penner
<b>STUDENTS:</b>	
Beginners:	Abraham Dyck, Jacob Dyck, Harry Price, Rosalie Thiessen, Lena Unrau, Bernard Harder, Peter Hildebrand, Fern Simpson, Jim Simpson, Gene Simpson.
Grade I:	Marion Bruce, Arthur Toews, Agnes Bergen, Arthur Groening, Annie Unrau, Jean White, Eddie Banman, John Hiebert, Gertrude Harder, Henry Harder.
Grade II:	Cleona Hyde, Sadie Thiessen, Jake Bergen, Hilda Giesbrecht, Gertrude Harder, Ida Thiessen, Lizzie Penner.
Grade III:	Barbara Bruce, Lillie White, Marjorie Penner, Mary Banman, Susie Bergen, Norman Groening, Jake Unrau, John Unrau.
Grade IV:	Margaret White, Gladys Fredricksen, Sadie Penner, Lizzie Thiessen, Tina Hiebert, Jake Harder, Herman Bitz.
Grade V:	Tom White, Cameron Hyde, Mary Thiessen, Jim Bruce, Pete Thiessen, John Unrau, Diedrich Heppner.
Grade VI:	Lena Banman, Rosie Groening, Elma Hiebert, Ervin Groening, Henry Thiessen, Frank Giesbrecht.
Grade VII:	Tina Bergen, Martha Cowie, Lora Hiebert, Tillie Groening, Cornie Thiessen.
Grade VIII:	Dave Groening, Frank White, Alex White, Jake Unrau, Harold Penner, Annie Thiessen, Liddie Groening, Clara Groening, Nettie Heppner, David Hiebert.
Grade IX:	Ellen Groening, George Groening.
Grade X:	Edna Penner, Jake Penner, Cornie Banman, Willie Hiebert.
<b>VAN DRIVERS:</b>	
	1. David P. Hildebrand 2. C. P. Banman 3. George J. Harder 4. P. H. Penner 5. John P. Unrau



*Here we come! Annie Blatz (top) and Susie Doell in the late 40's.*



*Grades 5-8, February 14, 1946.*



**REGISTRATION AT KANE SCHOOL 1936-37**

**TEACHERS:** Room I: Mabel M. Anderson  
Room II: G. G. Siemens

**TRUSTEES:** Mr. J. J. Toews (chairman)  
Mr. G. E. Penner  
(secretary/treasurer - first term)  
Mr. G. G. Siemens  
(secretary/treasurer - second term)  
Mr. F. F. Thiessen  
Mr. P. F. Penner  
Mr. A. H. Penner

**STUDENTS:**

**Beginners:** Herman Dyck, Raymond Penner, John Reimer, June Toews, Agatha Bergen, Abe Harder.

**Grade I:** Harry Price, Peter Hildebrand, Ben Thiessen, Rosalie Thiessen, Lena Unrau, Jim Simpson, Bernard Harder, Fern Simpson.

**Grade II:** Junior: Gene Simpson, Jacob Dyck, Abraham Dyck, Henry Harder, Eddie Banman, Art Groening.  
Senior: Gertrude Harder, Arthur Toews, Lizzie Penner, Agnes Bergen, Marion Bruce, Jean White, John Hiebert, Annie Unrau.

**Grade III:** Cleona Hyde, Sadie Thiessen, Jake Bergen, Ida Thiessen, Hilda Giesbrecht.

**Grade IV:** Mary Banman, Susie Bergen, Norman Groening, John Unrau, Barbara Bruce, Lillie White, Marjorie Penner, Jake Unrau.

**Grade V:** Tina Hiebert, Gladys Fredricksen, Mary Thiessen, Lizzie Thiessen, Sadie Penner, Jake Harder, Herman Bitz, Margaret White, Barbara Bruce.

**Grade VI:** Diedrich Heppner, Jim Bruce, Tom White, Cameron Hyde, Pete Thiessen, John Unrau.

**Grade VII:** Rosie Groening, Elma Hiebert, Lora Hiebert, Tillie Groening, Ervin Groening, Frank Giesbrecht, Tina Banman, Henry Thiessen.

**Grade VIII:** Lena Groening, Martha Cowie, Alex White, Cornie Thiessen.

**Grade IX:** Annie Thiessen, Liddie Groening, Frank White, Harold Penner, Andrew Heinrichs, George Groening.

**Grade X:** Ellen Groening.

**VAN DRIVERS:**

1. A. V. Thiessen
2. John G. Harder
3. A. J. Hyde
4. Peter Heppner

"It was moved that the school children be taken to Carman on June 30, 1937, on Toew's and Hiebert's trucks and that each child be given 15 cents for spending money." - from the secretary's minutes.



*Grade 5. Abe Schellenberg, Abe Suderman, Dick Hean.  
Gertie Schellenberg, Justina Enns, Tina Klassen,  
Esther Suderman, February, 1947.*

## REGISTRATION AT KANE SCHOOL 1937-38

**TEACHERS:** Room I: Evelyn Jack  
Room II: G. G. Siemens

**TRUSTEES:** Mr. G. E. Penner (chairman)  
Mr. G. G. Siemens (secretary/treasurer)  
Mr. F. Thiessen  
Mr. P. F. Penner  
Mr. A. H. Penner  
Mr. Abe Groening

### STUDENTS:

**Beginners:** Henry Giesbrecht, Bert Banman, Otto Thiessen, Edna Reimer, Peter Schellenberg.

**Grade I:** Herman Dyck, John Reimer, June Toews, Abe Harder, Raymond Penner, Agatha Bergen, Rennie Siemens, Marilyn Toews, Bernard Harder.

**Grade II:** Rosalie Thiessen, Ben Thiessen, Helen Dueck, Jacob Dyck, Henry Harder, Edward Banman, Arthur Groening.

**Grade III:** Abram Dyck, Gertrude Harder, Elizabeth Penner, Arthur Toews, Agnes Bergen, Marion Bruce, Jean White, John Hiebert.

**Grade IV:** Cleona Hyde, Sadie Thiessen, Hilda Giesbrecht, Jacob Bergen, Ida Thiessen.

**Grade V:** Lillie White, Norman Groening, Marjorie Penner, Mary Banman, Susan Bergen.

**Grade VI:** Eva Dueck, Barbara Bruce, Tina Hiebert, Gladys Fredricksen, Marie Thiessen, Lizzie Thiessen, Sadie Penner, Margaret White, Herman Bitz, Jake Harder.

**Grade VII:** Diedrich Heppner, Jim Bruce, Tom White, Cameron Hyde, Pete Thiessen, John Unrau, Rosie Groening, Elma Hiebert, Tina Banman, Billy Toews.

**Grade VIII:** Frank Giesbrecht, Ervin Groening, Henry Thiessen, Tillie Groening, Lora Hiebert, Pete Thiessen.

**Grade IX:** Martha Cowie, Alex White, Cornelius Thiessen, Walter Toews.

**Grade X:** Harold Penner, Frank White, Liddie Groening, Elda Toews.

### VAN DRIVERS:

1. Jacob S. Dyck
2. Cornie Banman
3. William N. Harder
4. Peter H. Penner
5. Walter G. Penner



*Grade 6. Donald Fredricksen, Willie Klassen, James Reimer, Tom Hean, Jake Neufeld. Lena Harder, Rosie Wiebe, Dora Blatz, Annie Bergen, February, 1947.*

## REGISTRATION AT KANE SCHOOL 1938-39

**TEACHERS:** Room I: Evelyn Jack  
Room II: G. G. Siemens

**TRUSTEES:** Mr. G. E. Penner (chairman)  
Mr. G. G. Siemens (secretary/treasurer)  
Mr. P. F. Penner  
Mr. F. F. Thiessen  
Mr. A. G. Toews  
Mr. A. A. Groening

### STUDENTS:

**Beginners:** Jessie Giesbrecht, Leonora Hyde, Mary Suderman, Annie Blatz, Wilma Toews, Orvan Penner.

**Grade I:** Otto Thiessen, Henry Giesbrecht, Edna Reimer, Peter Schellenberg, Bert Banman.

**Grade II:** Frank Blatz, Marilyn Toews, Herman Dyck, Reynold Siemens, Abe Harder, June Toews, Raymond Penner, Agatha Bergen, John Reimer, Harry Price, Bernard Harder, Annie Suderman.

**Grade III:** Rosilie Thiessen, Jacob Dyck, Henry Harder, Edward Banman, Ben Thiessen.

**Grade IV:** Elizabeth Penner, Marion Bruce, Agnes Bergen, John Hiebert, Art Groening, Jean White, Abram Dyck, Arthur Toews, Gertrude Harder.

**Grade V:** Cleona Hyde, Jacob Bergen, Sadie Thiessen, Hilda Giesbrecht, Ida Thiessen, Marjorie Penner.

**Grade VI:** Lillie White, Norman Groening, Mary Banman, Jacob Blatz.

**Grade VII:** Barbara Bruce, Tina Hiebert, Gladys Fredricksen, Marie Thiessen, Margaret White, Lizzie Thiessen.

**Grade VIII:** Diedrich Heppner, Jim Bruce, Tom White, Cameron Hyde, Bill Toews, Rosie Groening, Barney Groening, Henry Blatz.

**Grade IX:** Ervin Groening, Henry Thiessen, Lora Hiebert.

**Grade X:** Martha Cowie, Alex White, Cornelius Thiessen, Walter Toews, Liddie Groening.

### VAN DRIVERS:

1. Jacob S. Dyck
2. C. P. Banman
3. William N. Harder
4. D. J. Janzen
5. Walter G. Penner

On June 18, 1939, the students made a trip to Winnipeg to see the Royal Visit of King George VI and Queen Elizabeth.



*Grades 7&8. Alvin Harder, John Neufeld, Abe Reimer. Tina Reimer, Mary Suderman, Wilma Toews, Leonora Hyde, Annie Blatz, Nettie Enns, Susie Doell. February, 1947.*



*Harry Thiessen (sitting), Tom Hean, Al Harder, James Reimer. February, 1947.*



**REGISTRATION AT KANE SCHOOL 1939-40**

**TEACHERS:** Room I: Evelyn Russell  
Room II: Jean Sinclair  
Room III: G. G. Siemens

**TRUSTEES:** Mr. A. Hyde (chairman)  
Mr. G. E. Penner (secretary/treasurer)  
Mr. and Mrs. F. F. Thiessen  
Mr. A. Groening

**STUDENTS:**

Beginners: Arthur Braun, Katherine Reimer, Abe Reimer, Abe Schellenberg, Eldred Roylance Wycke.

Grade I: Annie Blatz, Leonora Hyde, Orvan Penner, Wilma Toews, Mary Suderman, John Penner.

Grade II: Jessie Giesbrecht, Bert Banman, Henry Giesbrecht, Edna Reimer, Peter Schellenberg, Otto Thiessen, Abe Harder, Bernard Harder.

Grade III: Frank Blatz, Agatha Bergen, Herman Dyck, Raymond Penner, Harry Price, Reynold Siemens, June Toews, Marilyn Toews, John Reimer, Annie Suderman, Mary Penner.

Grade IV: Jacob Dyck, Ben Thiessen, Edward Banman, Henry Harder, Elizabeth Braun.

Grade V: Agnes Bergen, Abram Dyck, Art Groening, Elizabeth Penner, Hilda Giesbrecht, John Hiebert, Arthur Toews, Jean White, Annie Penner, Nettie Penner, Evelyn Enns.

Grade VI: Cleona Hyde, Marjorie Penner, Jake Bergen, Annie Braun.

Grade VII: Norman Groening, Lillie White.

Grade VIII: Gladys Fredricksen, Margaret White, Lena Banman.

Grade IX: Rosie Groening, Tom White, Cameron Hyde, Pete Thiessen, Detray Groening, Diedrich Heppner.

Grade X: Lora Hiebert, Ervin Groening.

Grade XI: Liddie Groening, Elda Toews, John Braun, Walter Toews, Harold Penner, Frank White, Eddie Groening, Cornelius Thiessen, Reta Humbert, Edna Penner.

Grade XII: Ellen Groening.

**VAN DRIVERS:**

1. Ed Price
2. C. P. Banman
3. William N. Harder
4. A. J. Hyde
5. Anton Heppner



*Mr. Jake Bergen taught grades 5-8 in 1946-47.*

## REGISTRATION AT KANE SCHOOL 1940-41

<b>TEACHERS:</b>	Room I: Miss Rose Evelyn Russell Room II: Mr. George G. Siemens
<b>TRUSTEES:</b>	Mr. Abe J. Hyde (chairman) Mr. Leonard U. Penner (secretary/treasurer) Mr. Frank G. Blatz Mr. Abram A. Groening Mr. and Mrs. Frank F. Thiessen
<b>STUDENTS:</b>	
Beginners:	Annie Bergen, Dora Blatz, Justina Enns, Donald Fredricksen, Susie Giesbrecht, Dorothy Harder, James Reimer, Gerty Schellenberg, Lloyd Siemens, Abe Suderman, Arthur Wiebe.
Grade I:	Arthur Braun, Abe Reimer, Tena Reimer, Abe Schellenberg, Jake Dyck, Willie Klassen, Orvan Penner.
Grade II:	Annie Blatz, Leonora Hyde, Johnnie Penner, Esther Schellenberg, Mary Suderman, Wilma Toews, Helen Enns, Nettie Enns.
Grade III:	Henry Giesbrecht, Jessie Giesbrecht, Edna Reimer, Peter Schellenberg, Otto Thiessen.
Grade IV:	Henry Enns, Agatha Bergen, Frank Blatz, Herman Dyck, Mary Penner, Raymond

Penner, John Reimer, Reynold Siemens, Annie Suderman, June Toews, Marilyn Toews, Harry Boese.

Grade V:	Eva Braun, Erdman Braun, Lizzie Braun, Jacob Dyck, Evelyn Enns, Lizzie Penner, Nettie Penner, Benny Thiessen.
Grade VI:	John Hiebert, Hilda Giesbrecht, Manuel Schellenberg, Abram Dyck, Arthur Toews, Jean White, Agnes Bergen, Annie Penner, Arthur Groening, Arthur Boese.
Grade VII:	Alvan Schellenberg, Annie Braun, Cleona Hyde, Jake Blatz, Jake Bergen, Lily Boese.
Grade VIII:	Lillie White, Norman Groening.
Grade IX:	Gladys Fredricksen, Margaret White, Pete Braun.
Grade X:	Thomas White, Cameron Hyde.
Grade XI:	Ervin Groening, Walter Toews, Lora Hiebert.

### VAN DRIVERS:

1. J .S. Dyck
2. I. F. Giesbrecht
3. D. F. Wiebe
4. Peter P. Unrau
5. P. H. Penner



*Kane School.*



*Miss Tina Penner with her grades 5-8 in 1949.*

**REGISTRATION AT KANE SCHOOL 1941-42**

**TEACHERS:** Room I: Miss Tina V. Warkentine  
 Room II: Miss Mary J. Loewen  
 Room III: Mr. George G. Siemens

**TRUSTEES:** Mr. Abe Suderman (chairman)  
 Mr. Frank G. Blatz (secretary/treasurer)  
 Mr. and Mrs. Frank F. Thiessen  
 Mr. Abram A. Groening

**STUDENTS:**

**Beginners:** Tina Harder, Mary Enns, Tina Klassen, Esther Suderman, Mildred Toews, Margaret Penner, Nettie Schapansky, Edna Braun, Johnny Boese, Edward Dyck, Dick Hean.

**Grade I:** Gertie Schellenberg, Dorothy Harder, Justina Enns, Dora Blatz, Susie Giesbrecht, Annie Bergen, Abe Suderman, James Reimer, Tommy Hean, Donald Fredricksen, Lloyd Siemens, Arthur Wiebe.

**Grade II:** Tena Reimer, Abe Reimer, Arthur Braun, Abe Schellenberg, Orvan Penner, Willie Klassen.

**Grade III:** Leonora Hyde, Helen Enns, Mary Suderman, Nettie Enns, Esther Schellenberg, Wilma Toews, Annie Blatz, Johnny Penner, Jake Dyck.

**Grade IV:** Edna Reimer, Jessie Giesbrecht, Henry Enns, Otto Thiessen, Peter Schellenberg, Henry Giesbrecht.

**Grade V:** Agatha Bergen, Frank Blatz, Harry Boese, Lizzie Braun, Herman Dyck, Mary Penner, Raymond Penner, John Reimer, Rennie Siemens, Annie Suderman, June Toews, Marilyn Toews, Showichi Ito.

**Grade VI:** Eva Braun, Eddie Braun, Jake Dyck, Evelyn Enns, Nettie Penner, Benny Thiessen.

**Grade VII:** Agnes Bergen, Arthur Boese, Abe Dyck, Hilda Giesbrecht, John Hiebert, Arthur Groening, Manuel Schellenberg, Arthur Toews, Jean White.

**Grade VIII:** Jake Blatz, Lily Boese, Annie Braun, Cleona Hyde, Alvan Schellenberg.

**Grade IX:** Evelyn Wiebe, Elaine Hean, Lillie White, Norman Groening, Henry Blatz.

**Grade X:** Gladys Fredricksen, Margaret White, Mary Braun, Detray Groening.

**Grade XI:** Tom White, Cameron Hyde, Lora Hiebert.

**VAN DRIVERS:**

1. Arnold Hiebert
2. A. J. Hyde
3. P. P. Harder
4. J. W. Penner
5. W. F. Penner



*Kane Gals! Wilma, Mary, Susie, Leonora and Annie at the skating shack on the schoolyard in the late 40's.*



*Kane Gals — fifty years later! Wilma (Toews) Taylor, Mary (Suderman) Dyck, Susie (Doell) Winther, Lenore (Hyde) Greening, Anne (Blatz) Wiebe, Tina (Reimer) Loewen at the Lowe Farm Centennial in 1999.*



## REGISTRATION AT KANE SCHOOL 1942-43

**TEACHERS:** Room I: Miss Tina V. Warkentine  
Room II: Miss Helen J. Penner  
Room III: Mr. George G. Siemens

**TRUSTEES:** Mr. Abe Suderman (chairman)  
Mr. Frank G. Blatz (secretary/treasurer)  
Mr. Peter U. Braun  
Mr. Frank F. Thiessen  
Mr. Isaac Wiebe

**STUDENTS:**

**Beginners:** Norman Blatz, Peter Penner, Stanley Harder, Aubrey Groening, Billy Schapansky, Johnny Martens, Joe Reimer, Helen Reimer.

**Grade I:** Gertie Schellenberg, Tina Harder, Mary Enns, Tina Klassen, Esther Suderman, Margaret Penner, Nettie Schapansky, Edna Braun, Johnny Boese, Dick Hean, Arthur Wiebe, Abe Suderman, Mildred Toews.

**Grade II:** Dorothy Harder, Justina Enns, Dora Blatz, Susie Giesbrecht, Annie Bergen, Lloyd Siemens, James Reimer, Tommy Hean, Donald Fredricksen, Abe Schellenberg.

**Grade III:** Willie Klassen, Orvan Penner, Arthur Braun, Nettie Enns, Alvin Harder.

**Grade IV:** Tena Reimer, Leonora Hyde, Helen Enns, Mary Suderman, Esther Schellenberg, Wilma Toews, Annie Blatz, Johnnie Penner, Abe Reimer.

**Grade V:** Henry Enns, Jessie Giesbrecht, Henry Giesbrecht, Edna Reimer, Peter Schellenberg, Otto Thiessen.

**Grade VI:** Agatha Bergen, Frank Blatz, Harry Boese, Lizzie Braun, Schowichi Ito, Mary Penner, Raymond Penner, John Reimer, June Toews, Rennie Siemens, Annie Suderman, Marilyn Toews.

**Grade VII:** Eva Braun, Benny Thiessen.

**Grade VIII:** Arthur Boese, Arthur Groening, Manuel Schellenberg, Arthur Toews, Jean White, John Hiebert.

**Grade IX:** Annie Braun, Lillie Boese, Alvan Schellenberg, Cleona Hyde.

**Grade X:** Elaine Hean, Lillie White, Norman Groening, Henry Blatz.

**Grade XI:** Gladys Fredricksen, Margaret White.

**Grade XII:** Harold Penner.

### VAN DRIVERS:

1. Alex White
2. A. G. Toews
3. G. G. Harder
4. P. F. Penner
5. F. G. Blatz



*The Coronation of Queen Elizabeth II, June 2, 1953.*



*Fun in the snow in the 50's.*

## REGISTRATION AT KANE SCHOOL 1943-44

<b>TEACHERS:</b>	Room I: Miss Tina V. Warkentine Room II: Mr. Rufus J. Schellenberg Room III: Mr. George G. Siemens
<b>TRUSTEES:</b>	Mr. Abe Suderman (chairman) Mr. Frank G. Blatz (secretary/treasurer) Mr. Peter U. Braun Mr. Frank F. Thiessen Mr. Isaac Wiebe
<b>STUDENTS:</b>	
Beginners:	Winna Hiebert, Shirley Braun, Janice Hyde, Frieda Dueck, Verna Penner, Mary Klassen, Carrie Derksen, Shirley Born, Jerry Toews, Verna Schroeder, Laurie Born, Billy Penner, Donald Harder.
Grade I:	Norman Blatz, Aubrey Groening, Stanley Harder, Johnny Martens, Peter Penner, Joe Reimer, Helen Reimer, Mary Enns.
Grade II:	Margaret Penner, Justina Enns, Edna Braun, Tina Klassen, Mildred Toews, Tina Harder, Esther Suderman, Gertie Schellenberg, Nettie Schapansky, Arthur Wiebe, Abe Suderman, Dick Hean, Johnny Boese, Menno Dueck.
Grade III:	Susie Giesbrecht, Dorothy Harder, Annie Bergen, Dora Blatz, Donald Fredricksen, Tom Hean, Lloyd Siemens, James Reimer, Abe Schellenberg, Orvan Penner.
Grade IV:	Nettie Enns, Helen Enns, Alvin Harder, Arthur Braun, Willie Klassen, Johnny Born.
Grade V:	Annie Blatz, Henry Enns, Leonora Hyde, John Penner, Abe Reimer, Esther Schellenberg, Peter Schellenberg, Mary Suderman, Wilma Toews, Tena Reimer.
Grade VI:	Henry Giesbrecht, Jessie Giesbrecht, Raymond Penner, Otto Thiessen, Edna Reimer.
Grade VII:	Agatha Bergen, Frank Blatz, Harry Boese, Elizabeth Braun, Mary Penner, John Reimer, Reynold Siemens, Annie Suderman, June Toews, Marilyn Toews.
Grade VIII:	Eva Braun, Benny Thiessen.
Grade IX:	Arthur Boese, Manuel Schellenberg, Arthur Toews, Jean White, Jake Blatz.
Grade X:	Lillie Boese, Annie Braun, Alvan Schellenberg, Cleona Hyde.
Grade XI:	Elaine Hean, Lillie White.

## VAN DRIVER:

1. D. Friesen
2. J. J. Klassen
3. Bill Dyck
4. P. H. Penner
5. F. G. Blatz



*Leonard Born, James Penner, Dick Toews, Edwin Thiessen, Larry Born, Elva Born, Annette Harder.*



*Frank Groening family, Martha Kebler and the Martin Heppner family having lunch at the school picnic.*

## REGISTRATION AT KANE SCHOOL 1944-45

**TEACHERS:** Room I: Mr. Rufus J. Schellenberg  
Room II: Mr. Nicolai G. Neufeld

**TRUSTEES:** Mr. Frank G. Blatz (chairman)  
Mr. Gustave E. Penner (secretary/treasurer)  
Mr. Abe Suderman  
Mr. Isaac Wiebe  
Mr. Peter U. Braun

### **STUDENTS:**

**Grade I:** Laurie Borne, Shirley Born, Shirley Braun, Frieda Dueck, Caroline Derksen, Winna Hiebert, Janice Hyde, Mary Klassen, Johnny Martens, Billy Penner, Verna Penner, Verna Schroeder, Jerry Toews, Johnny Harder, Donald Harder, Aubrey Groening.

**Grade II:** Norman Blatz, Mary Enns, Stanley Harder, Loretta Neufeld, Peter Penner, Helen Reimer, Joe Reimer, Willie Harder.

**Grade III:** Edna Braun, Menno Dueck, Justina Enns, Tina Harder, Dick Hean, Tina Klassen, Gertie Schellenberg, Abe Suderman, Esther Suderman, Mildred Toews, Arthur Wiebe.

**Grade IV:** Annie Bergen, Dora Blatz, Donald Fredricksen, Tom Hean, Dorothy Harder, Orvan Penner, James Reimer, Abe Schellenberg, Lena Harder, Jake Neufeld, Rosie Wiebe.

**Grade V:** Peter Schellenberg, Arthur Braun, Alvin Harder, Willie Klassen, Nettie Enns, Helen Enns.

**Grade VI:** Peter Schellenberg, John Penner, Annie Blatz, Wilma Toews, Leonora Hyde, Abe Reimer, Esther Schellenberg, Tena Reimer, John Neufeld, Henry Enns, Mary Suderman.

**Grade VII:** Otto Thiessen, Eva Thiessen, Raymond Penner, Edna Reimer.

**Grade VIII:** Marilyn Toews, June Toews, Frank Blatz, Mary Penner, Betty Braun, Agatha Bergen, Annie Suderman, John Reimer.

**Grade IX:** Benny Thiessen, Eva Braun.

**Grade X:** Jean White, Arthur Toews, Manuel Schellenberg.

### **VAN DRIVERS:**

1. John J. Klassen
2. Henry J. Kehler
3. G. G. Harder
4. P. H. Penner
5. Peter Heppner



*Grade XI graduation, 1953. Gertrude Schellenberg, Esther Suderman, Albert Groening.*



*Grades 1-4 in 1956.*



*Miss Susan Peters and the grades 1-4 in 1956-57.*



**REGISTRATION AT KANE SCHOOL 1945-46**

**TEACHERS:** Room I: Miss Hilda Lohrenz  
Room II: Mrs. Marion E. Hiebert  
Room III: Mr. Nicolai G. Neufeld

**TRUSTEES:** Mr. Frank G. Blatz (chairman)  
Mr. Gustave E. Penner (secretary/treasurer)  
Mr. Abe Suderman  
Mr. Peter U. Braun  
Mr. Jake Born

**STUDENTS:**

**Beginners:** James Penner, Tina Harder, Heather Schellenberg, Erdmann Derksen, Larry Born, Margaret Neufeld, Nettie Kehler, Dick Toews, Walter Born, Leonard Neufeld, Johnny Harder, Dorothy Friesen, Edwin Thiessen, Annie Harder.

**Grade I:** Dorothy Wiebe, Margaret Reimer, Hilda Harder, Linda Neufeld, Leona Derksen, Shirley Born.

**Grade II:** Janice Hyde, Verna Schroeder, Verna Penner, Shirley Braun, Mary Klassen, Wilma Hiebert, Billy Penner, Jerry Toews, Caroline Derksen, Johnny Harder.

**Grade III:** Mary Enns, Peter Penner, Stanley Harder, Loretta Neufeld, Helen Reimer, Norman Blatz, Joe Reimer, Willy Harder, Gorden Mohr.

**Grade IV:** Tina Klassen, Gertie Schellenberg, Esther Suderman, Edna Braun, Justina Enns, Dick Hean, Abe Suderman, Mildred Toews.

**Grade V:** Annie Bergen, Dora Blatz, Donald Fredricksen, Lena Harder, Tom Hean, Willie Klassen, Jake Neufeld, Orvan Penner, James Reimer, Abe Schellenberg, Rosie Wiebe.

**Grade VI:** Arthur Braun, Helen Enns, Nettie Enns, Alvin Harder.

**Grade VII:** Annie Blatz, Leonora Hyde, Johnny Penner, Abe Reimer, Tena Reimer, Mary Suderman, Esther Schellenberg, Wilma Toews, John Neufeld, Henry Enns, Peter Schellenberg.

**Grade VIII:** Edna Reimer, Otto Thiessen.

**Grade IX:** Betty Braun, Mary Penner, June Toews, Frank Blatz, John Reimer.

**Grade X:** Betty Wiebe, Annie Epp, Eva Braun, Ben Thiessen.

**Grade XI:** Cleona Hyde, Jean White, Arthur Toews.

**VAN DRIVERS:**

1. Jake I. Brown
2. Henry J. Kehler
3. William N. Harder
4. J. J. Klassen
5. Walter G. Penner



*Kane School Picnic, 1956.*

**REGISTRATION AT KANE SCHOOL 1946-47**

<b>TEACHERS:</b>	Room I: Miss Mary Duerksen Room II: Miss Ella Klassen Room III: Mr. Henry Friesen
<b>TRUSTEES:</b>	Mr. Frank G. Blatz (chairman) Mr. Abe Suderman (secretary/treasurer) Mr. Peter U. Braun Mr. Gustave E. Penner Mr. Jake Born
<b>STUDENTS:</b>	
Beginners:	Reta Friesen, Alvin Penner, Johnny Klassen Walter Thiessen, Ernie Born.
Grade I:	Larry Born, Eddie Derksen, Dorothy Friesen, Annie Harder, Johnny Harder, Tina Harder, Nettie Kehler, James Penner, Dick Toews, Heather Schellenberg, Edwin Thiessen, Leonard Neufeld, Walter Born, Johnny Unrau, Elva Born.
Grade II:	Leona Derksen, Hilda Harder, Margaret Reimer, Johnny Thiessen, Linda Neufeld, Shirley Born, Peter Unrau, Leonard Born.
Grade III:	Caroline Derksen, Bernie Friesen, Janice Hyde, Billy Penner, Verna Penner, Verna Schroeder, Jerry Toews, Mary Klassen, Harry Thiessen, Johnny Harder.
Grade IV:	Norman Blatz, Mary Enns, Wilfred Friesen, Stanley Harder, Willie Harder, Peter Penner, Helen Reimer, Joe Reimer, Mary Unrau.
Grade V:	Abe Suderman, Abe Schellenberg, Dickie Hean, Justina Enns, Esther Suderman, Gertie Schellenberg, Mildred Toews, Tina Klassen.
Grade VI:	Annie Bergen, Dora Blatz, Donald Fredricksen, James Reimer, Lena Harder, Rosie Wiebe, Tom Hean, Willie Klassen, Jake Neufeld.
Grade VII:	Alvin Harder, Nettie Enns.
Grade VIII:	Annie Blatz, Abe Reimer, Johnny Penner, Mary Suderman, Susie Doell, Tena Reimer, Wilma Toews, Leonora Hyde, John Neufeld.
Grade IX:	Edna Reimer, Annie Suderman, Otto Thiessen.
Grade X:	June Toews, Mary Penner, John Reimer, Frank Blatz.
Grade XI:	Eva Braun, Ben Thiessen.

**VAN DRIVERS:**

- 1 Frank Thiessen
2. Henry J. Kehler
3. William N. Harder
4. Walter A. Toews
5. Alex J. White

*Girl's Baseball Team, 1957.**Grade VIII, 1959.*